



Weekly update on Cyclone Gabrielle recovery activity

Extreme Weather Recovery Directorate

- MPI has established the Extreme Weather Recovery Directorate to ensure appropriate engagement and support for national and regional recovery work. The directorate aims to enable faster and effective delivery of recovery initiatives, support collaboration across MPI branches, and provide visible support networks for the regions. Recruitment for the Directorate is underway.

Operations Muster and Reach

- Operation Muster is winding down the active livestock movement coordination for most areas in the Hawke's Bay.
- There is a contract in place for the next two months to support five isolated farms in the Pūtōrino area.
- MPI continues to maintain contact with isolated farms through Operation Reach. It is winding down, but there are likely to be a few helicopter drops over the next few months. Fencing materials will be delivered to Tokomaru Bay within the next couple of weeks.



\$45.5 million announced from Budget 2023 to support extreme weather recovery

On 14 May 2023 the Government announced \$45.5 million to be invested through Budget 2023 to support the recovery of rural communities from the extreme weather events.



\$59.6 million grant applications paid

As at 15 May 5,248 applications for farmer and grower recovery grants have been approved and paid, totalling \$59.6 million in value.



560,000 native species to be planted in the Waikato

As part of the Hill Country Erosion Programme, [Waikato Regional Council plans to plant](#) 560,000 native (tree) species and 100,000 exotic species by 2027. This will provide the best defence against future erosion.

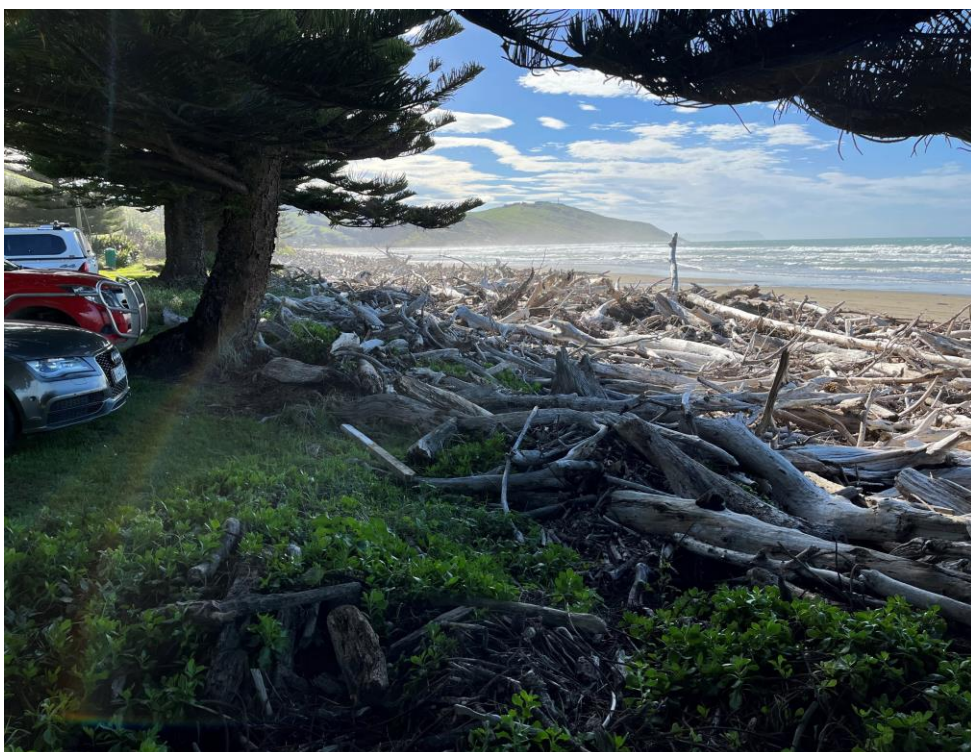


100 horticulture and arable growers heavily affected in Hawke's Bay and Tairāwhiti

MPI has estimated that 100 horticulture and arable growers in Hawke's Bay and Tairāwhiti, totalling around 4,900 hectares, were heavily affected by the cyclone.



Waikare Gorge broken bridge on State Highway 2 between Wairoa and Napier. This has been replaced by a new bailey bridge.



The woody debris built up at Akitio beach (east of Eketāhuna). The debris is currently preventing access to the beach, impacting tourism and forcing the cancellation of planned events.

Key Updates

- The announcement of the North Island Weather Event (NIWE) woody debris fund was well-received across the forestry sector. MPI officials were in the Hawke's Bay and Tairāwhiti last week, meeting with the regional councils and iwi to ensure that access to the woody debris fund will be as fast as possible.
- The bailey bridge in the Waikare Gorge opened on Sunday 14 May. This bridge provides road access on State Highway 2 from Wairoa to Napier between 7am – 6pm daily.
- The MPI Regional Recovery Lead met with the Chair of the Board and the Chief Executive from the Regional Recovery Agency in the Hawke's Bay to discuss the strategy for the recovery and the agency's focus on severely affected land.
- The Government has allocated \$25 million to the Hill Country Erosion Programme from 2023 – 2027. The funding will provide support to 14 regional erosion control programmes over this four-year period. The programme is an ongoing partnership between MPI, local government, landowners, and councils.
- As part of the Fencing Contractors' Association of New Zealand's 'help a mate, buy a gate' campaign, an army of volunteers has been assembled to help with re-fencing. The work started on 18 May in cyclone-damaged parts of the Hawke's Bay. You can find [more information about the campaign and how to get involved here](#).
- Lance Burdett, former crisis negotiator with the New Zealand Police, met with a group of rural professionals and other groups in the Hawke's Bay to discuss coping with event recovery. Around 60 people attended the event in Pātoka.
- The Farmy Army led a volunteer event in Puketapu on 17–18 May to help farmers with debris removal, fence repairs, crop salvage, and helping to restore damaged structures. There will be [another event in Waipukurau](#) on 24 May.
- Local regional rural recovery meetings are being held throughout the Wairarapa and Tararua districts. A meeting was held on 17 May between the Tora community, South Wairarapa District Council, Masterton District Council, the Rural Support Trust, and MPI Rural Communities and Farming Support, to discuss roading access and the funding for roading maintenance.