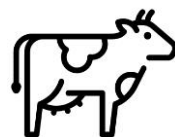
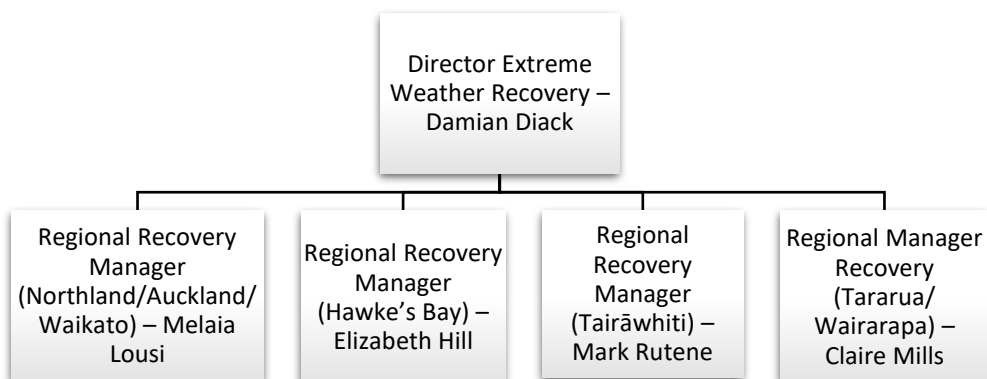




## Weekly update on Cyclone Gabrielle recovery activity

### Extreme Weather Recovery Directorate

- MPI has established an Extreme Weather Recovery Directorate to ensure appropriate engagement and support for national and regional recovery work. The directorate aims to enable faster and effective delivery of recovery initiatives, support collaboration across MPI branches, and provide visible support networks for the regions. Recruitment for the Directorate is underway.



### 69 farms requested assistance in Northland

Through Enhanced Taskforce Green, 69 farmers in Northland have requested assistance for support with clean-up projects.



### \$53.3 million grant applications paid

As at 26 April, 4,735 grant applications for the Farmers and Growers Fund have been received and paid, totalling \$53.3 million in value.



### 37 isolated farms

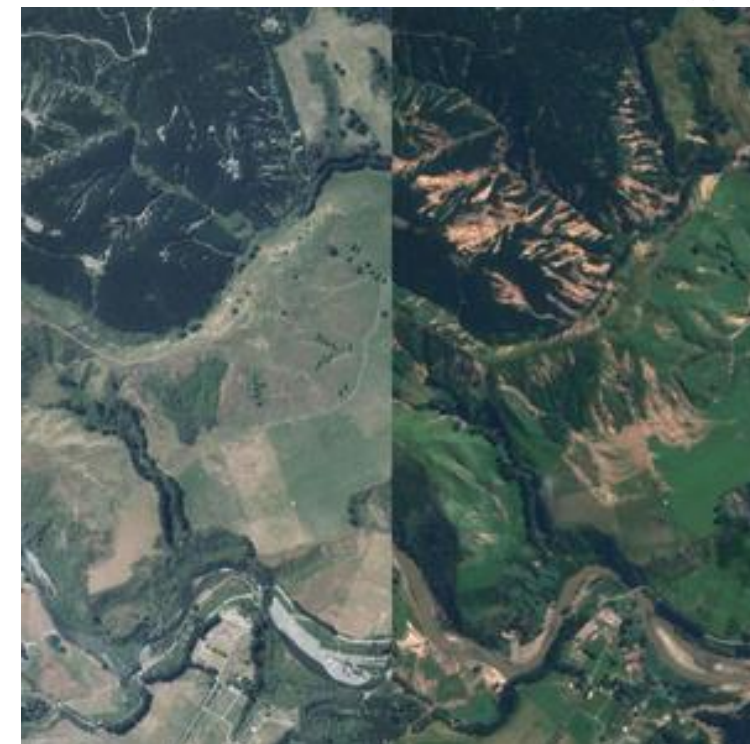
MPI is maintaining active contact with 32 farms in Tairāwhiti and 5 farms in Hawke's Bay where access is restricted.

At the end of March 2023 a total of 53 farms were isolated (22 farms in Tairāwhiti and 31 farms in the Hawkes Bay).



### Estimated \$1.2 billion export loss

Westpac revised its latest quarterly forecast of exports in 2023 down by \$1.2 billion to account for Cyclone Gabrielle.



The image shows the area around Mohaka River (Hawke's Bay) before (left) and after (right) the cyclone.

### Operations Reach and Muster

- Operation Reach provided pallets of dog food to Wairoa and the East Coast last week.
- Operation Muster is progressing well, although the opening of the Waikare Bailey bridge has been delayed until the end of May.
- The ford for Waikare River, where the Glenbrook bridge washed away, is now operational in fine weather. Three large farm stations that have been inaccessible for 10 weeks are starting to get some livestock across this ford.

### Farmer trends in Tararua

- Farmers in the Tararua region are making progress with restoring stock control (fencing, tracks, etc) but still have a lot of work ahead. Many farmers are reallocating fertiliser budget into infrastructure. This may be a risk to pasture production for those who have not applied fertiliser for the last couple of years due to the high prices.
- At a recent Farming4Profit meeting farmers indicated that they are purchasing diggers to support clean-up and in preparation for future extreme weather events.
- Some farmers are returning to conventional fencing as they rebuild, due to the loss of electricity supply throughout the cyclone.

### Key Updates

MPI business unit updates:

- Members of the Primary Sector Wellbeing Reference Group have organised a cyclone recovery wellbeing webinar on 4 May called 'The Big Check-In'. The event is supported by a collective of primary sector organisations and individuals, including the Rural Support Trust, Agri-Women's Development Trust, Horticulture New Zealand, Vegetables NZ, Summerfruit NZ, New Zealand Winegrowers, Beef + Lamb New Zealand, DairyNZ, First Mate, and MPI. Publicity material for this event is currently being circulated.

Regional updates:

- The Enhanced Taskforce Green programme (a Ministry of Social Development initiative) has received extra funding extending the programme to 16 June 2023. This will allow the team to cover the costs for overnight accommodation and travel to cover more farms in the Whangarei District and North Auckland area.
- Countdown has changed payment terms for livestock processing from seven days to payment within four days to improve cashflow for farmers.
- Ballance Agri-Nutrients is offering deferred payment terms (up to three months) for fertiliser purchases if needed.
- The Tararua Rural Recovery Group received 40 requests for assistance in response to a rural mail drop offering support to impacted farmers. Most of the requests were for assistance with on farm clean-up work, including slip clearing, debris removal and fencing. MPI is working together to assist with the coordination of on-farm working bees, including fencing, and seeking volunteers.
- The feedback from the Wairarapa Farming4Profit meetings was that farmers have been and will sell down stock to reflect reduced carrying capacity due to slips. Many have lost wintering ground. A future challenge will be building the stock rates back up.
- NZ Forest Managers 2022 Ltd (NZFM) has measured 6,500 hectares of 18-year-old trees or older in its central North Island managed estate as suffering wind damage from the cyclone. Salvage harvest operations commenced almost immediately after the cyclone with NZFM more than doubling its harvesting capacity to 22 crews. The current bottleneck for salvage operations is the lack of logging trucks and drivers. Currently NZFM has around 58,000m<sup>3</sup> in stock across its managed estate.