

AEGIS MAP

Agency Enhanced Geographic Information Systems MAP

Pilot Project: Prototype

A Joint Manawatu-Wanganui & Hawkes Bay Project



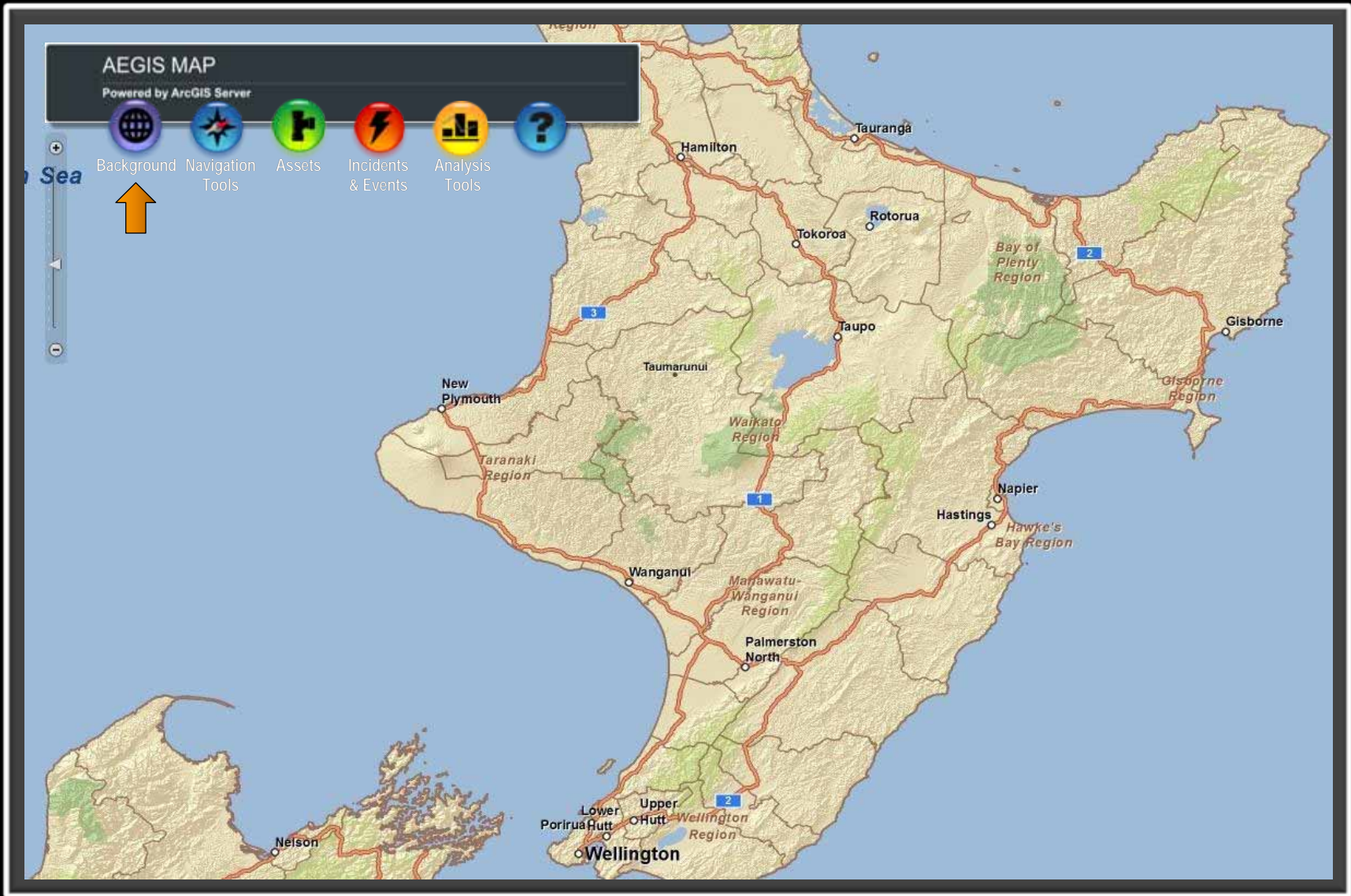
AEGIS MAP

User ID: Agency

Password: *****

OK





AEGIS MAP

Powered by ArcGIS Server



Sea

Background

MetService

Imagery Data

Risk Layers

Statistics

Cadastral





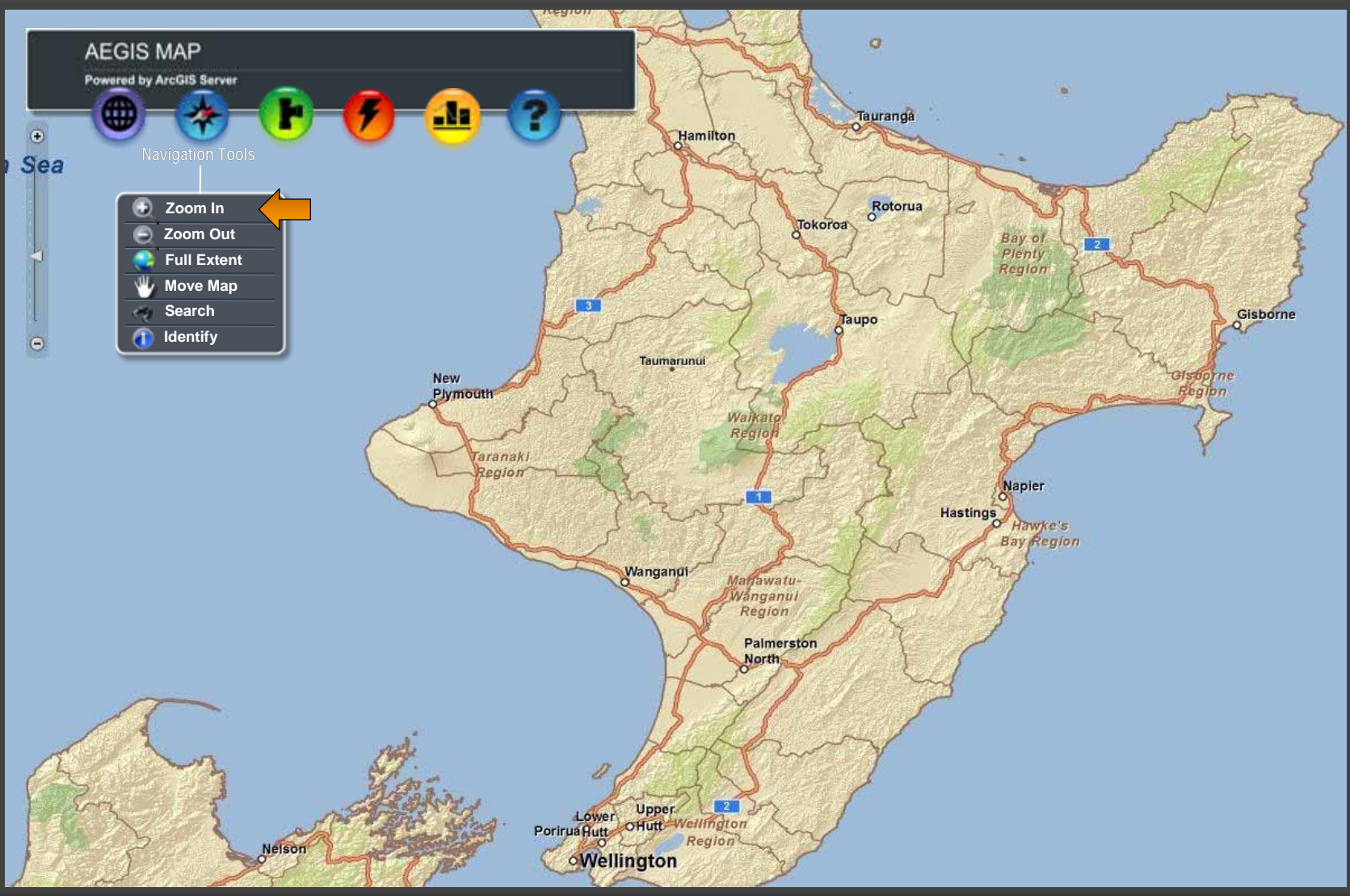
AEGIS MAP

Powered by ArcGIS Server



Navigation Tools

- Zoom In
- Zoom Out
- Full Extent
- Move Map
- Search
- Identify



AEGIS MAP

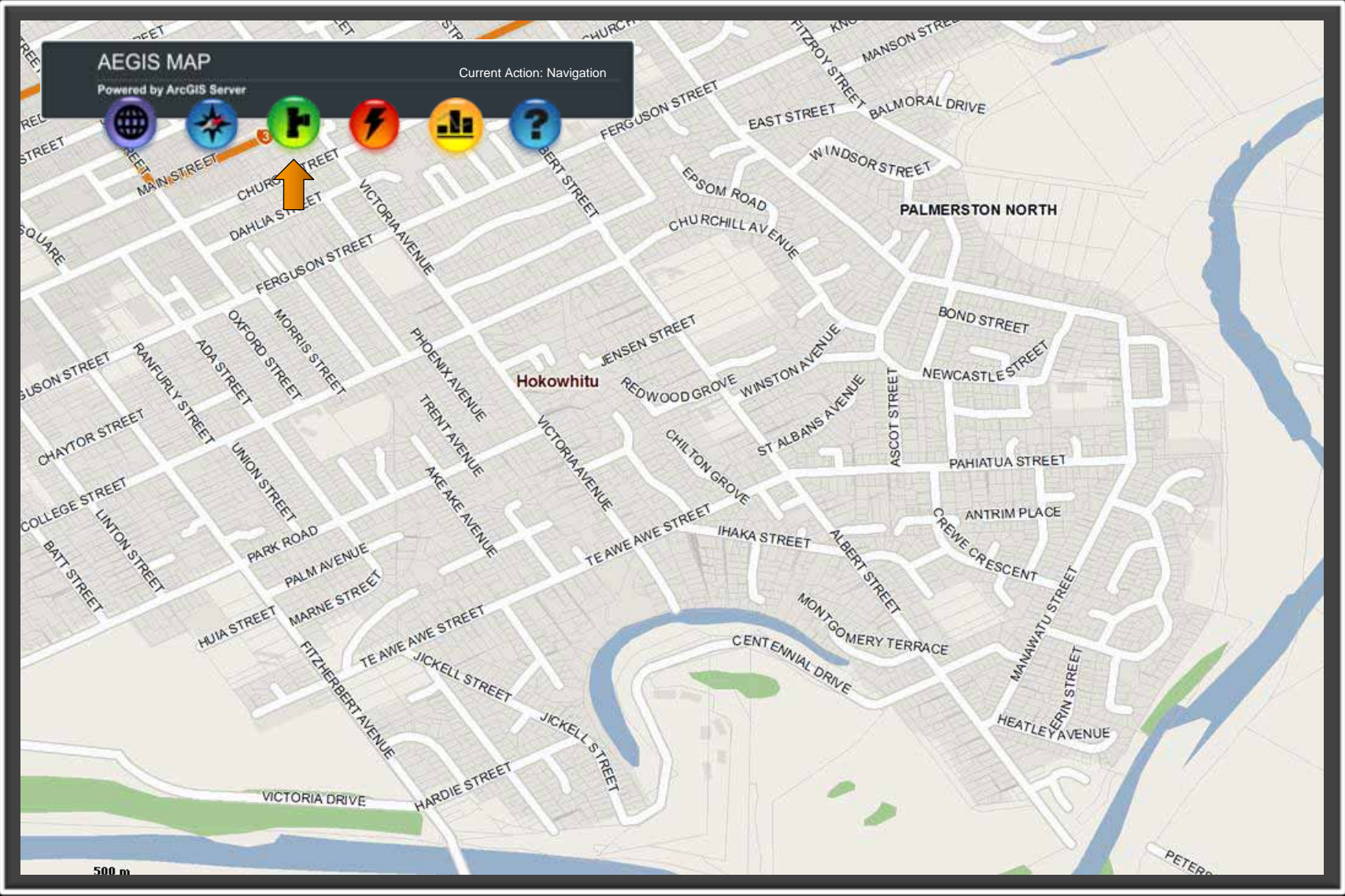
Powered by ArcGIS Server

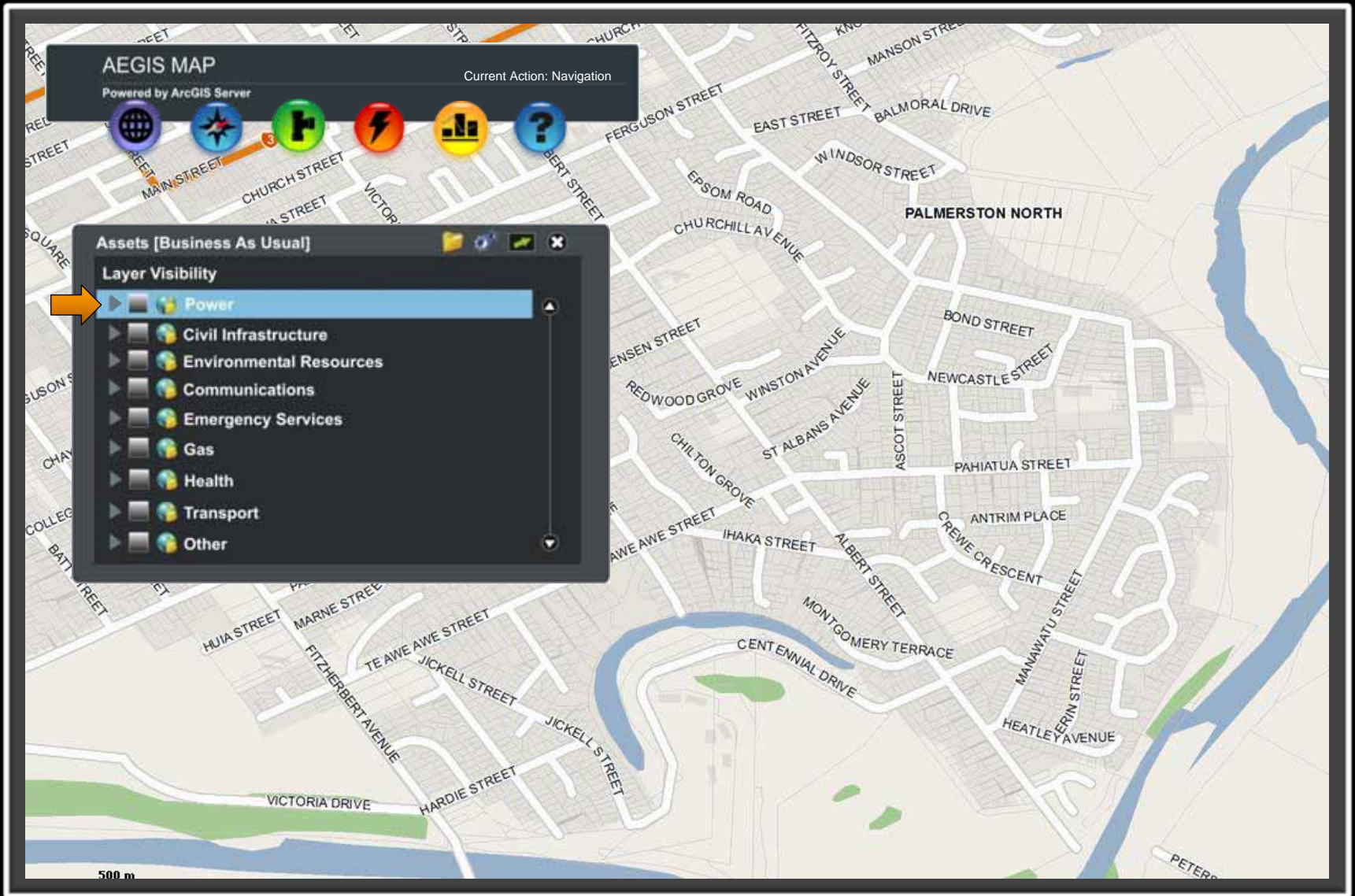
Current Action: Navigation

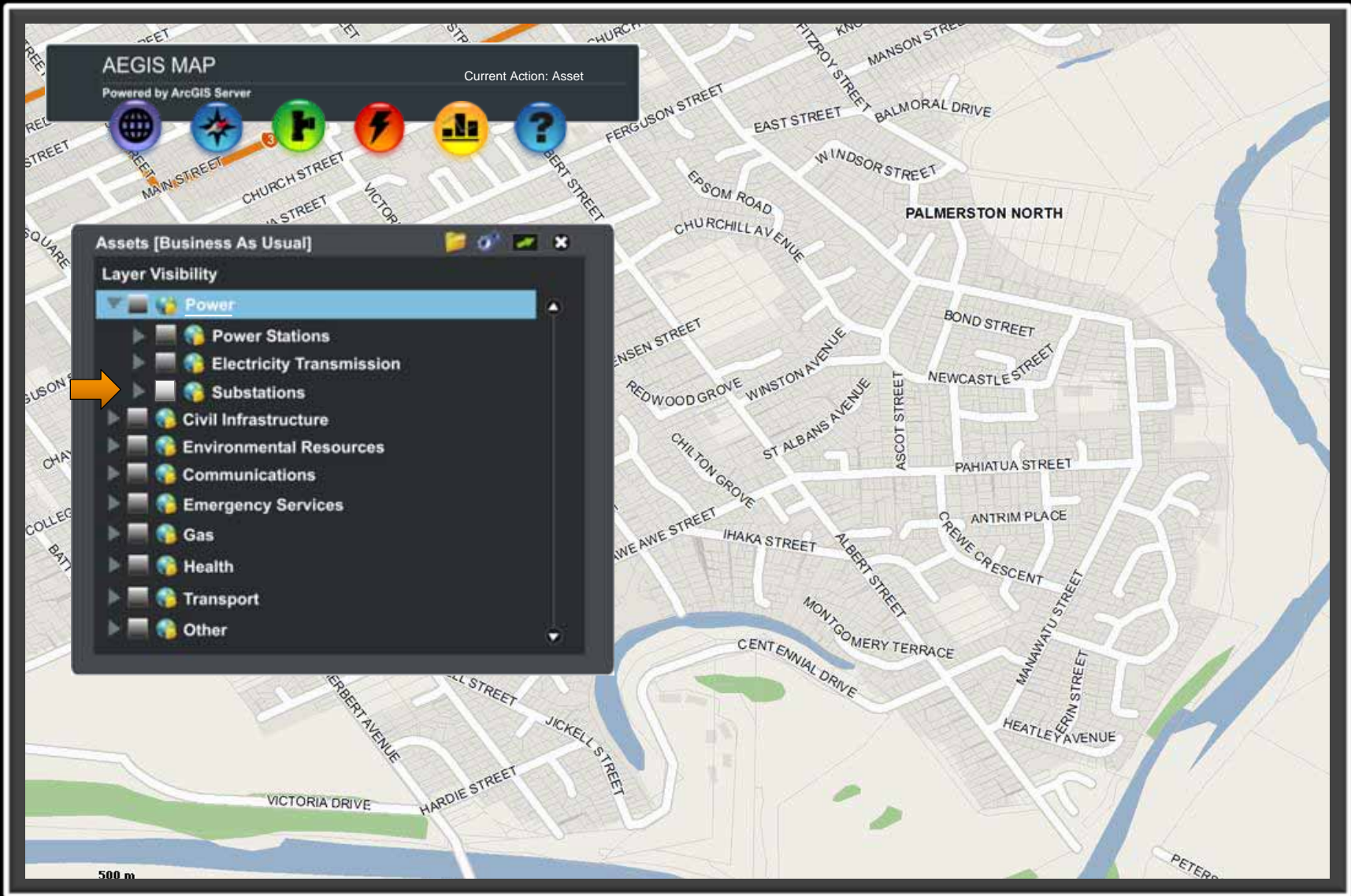


Sea









AEGIS MAP

Powered by ArcGIS Server

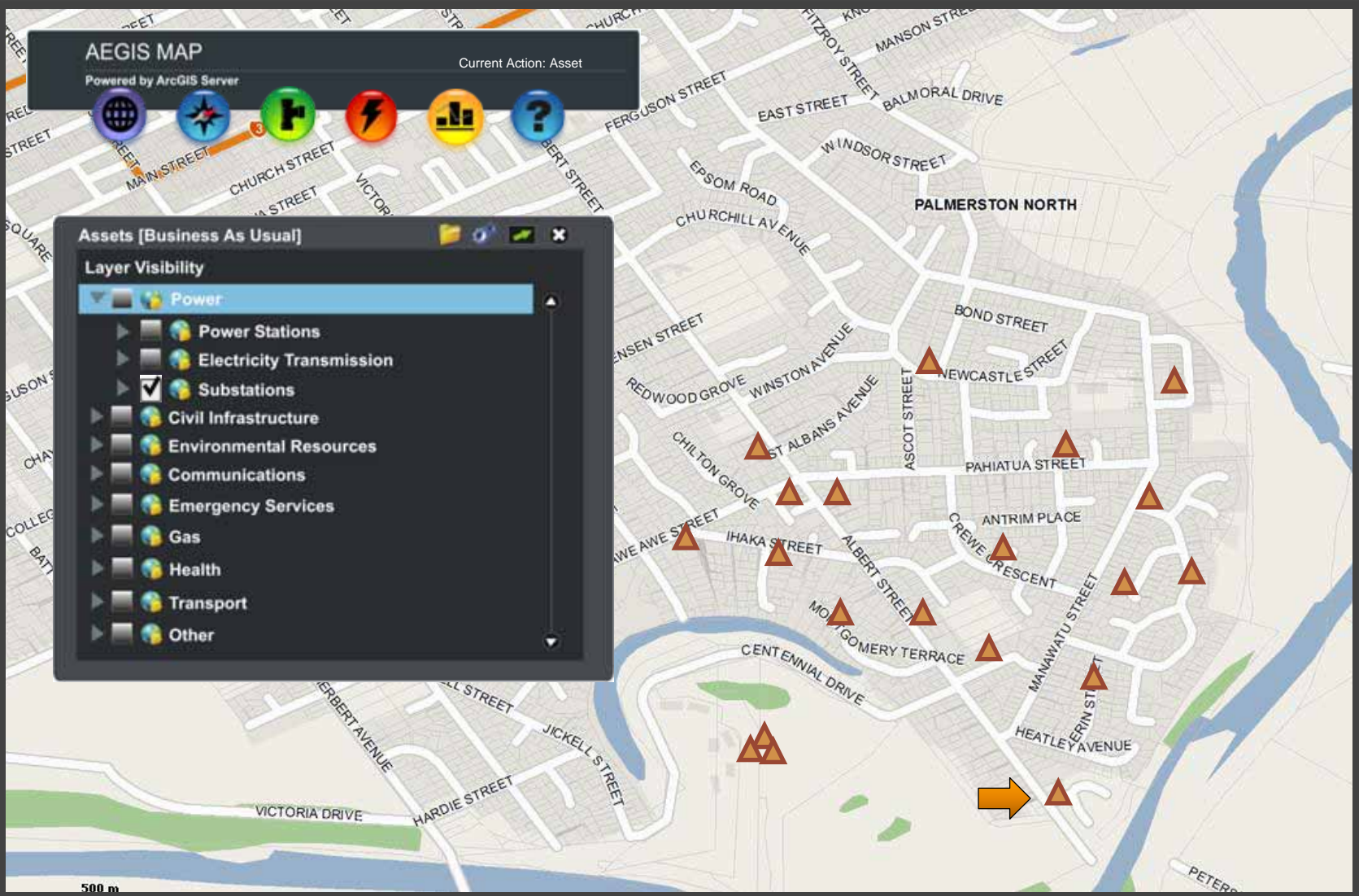
Current Action: Asset

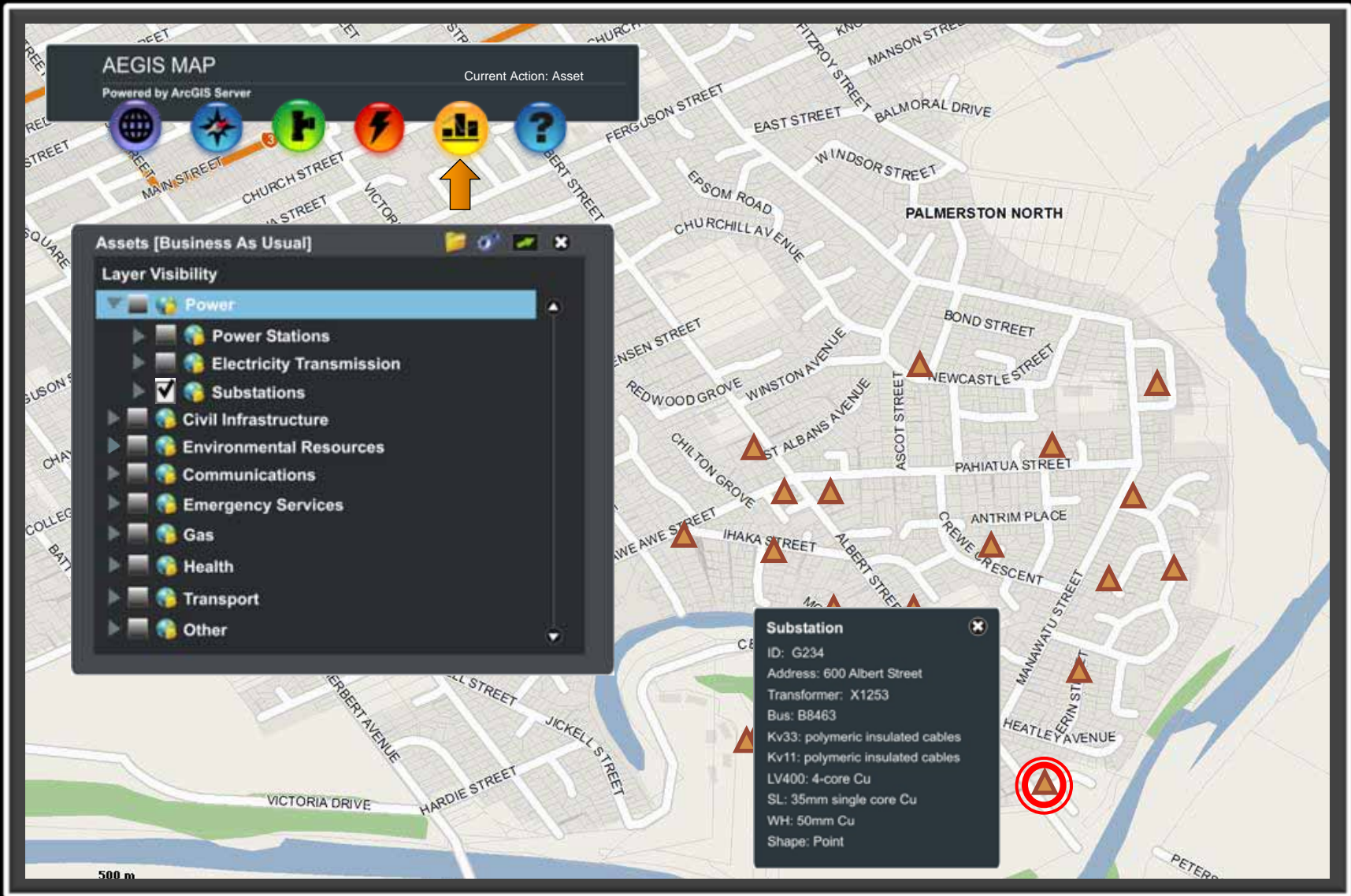


Assets [Business As Usual]

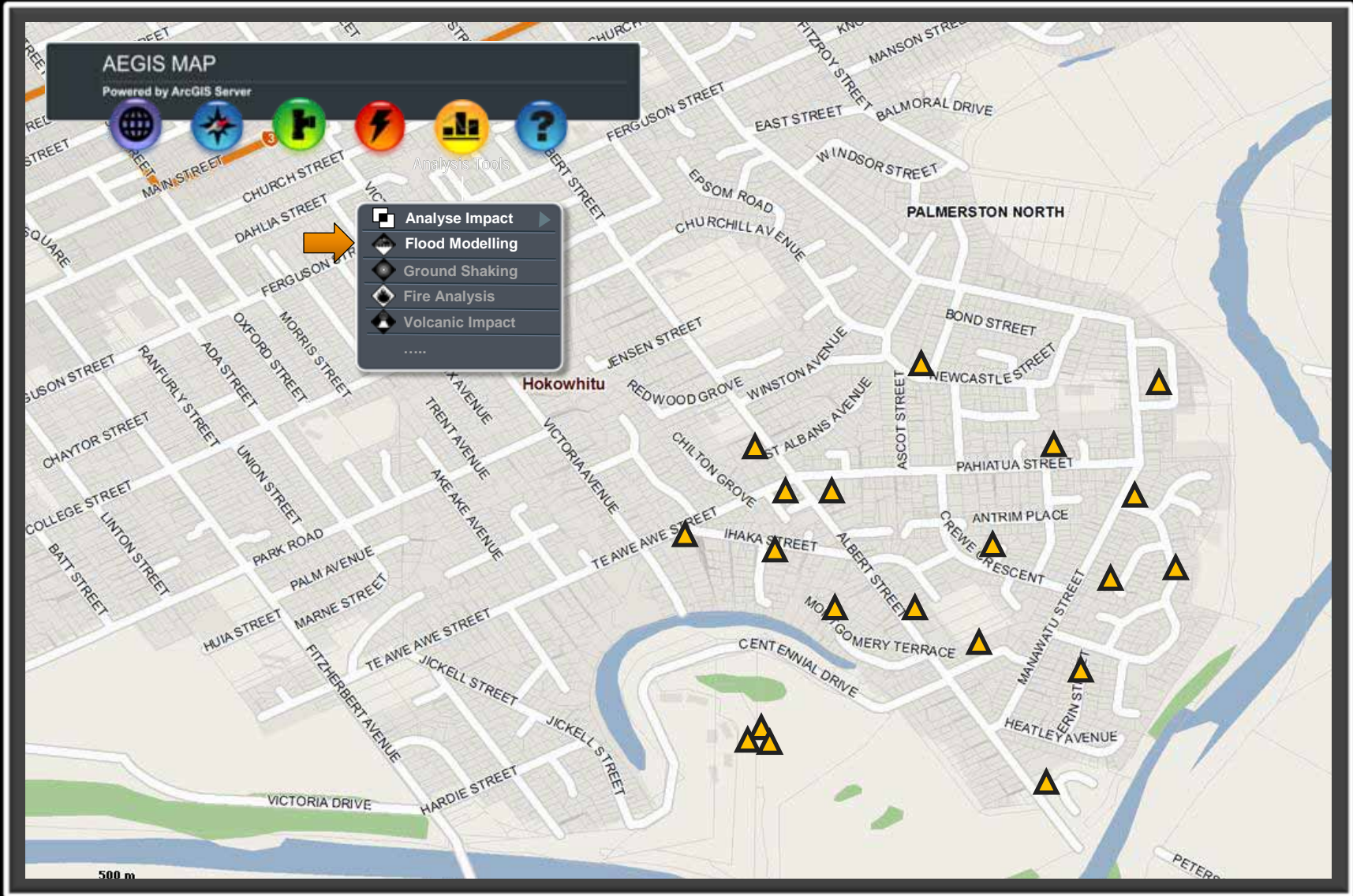
Layer Visibility

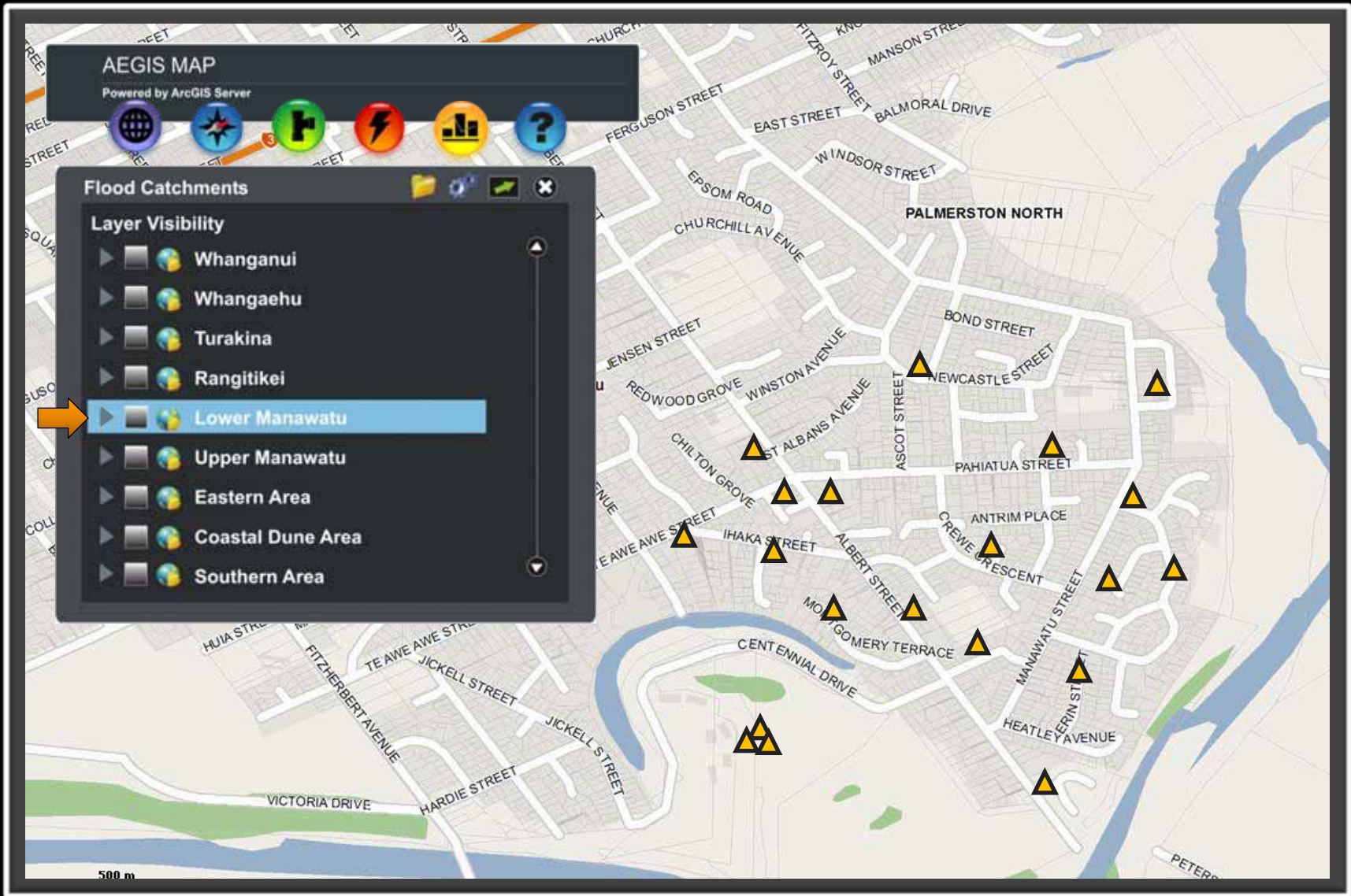
- Power
 - Power Stations
 - Electricity Transmission
 - Substations
 - Civil Infrastructure
- Environmental Resources
- Communications
- Emergency Services
- Gas
- Health
- Transport
- Other





Flood Scenario: Check existing flood models





AEGIS MAP

Powered by ArcGIS Server



Flood Catchments

Layer Visibility

- Lower Manawatu
- Lower Manawatu River
- Whakarongo/Staces Road
- Palmerston North City
- Taonui Basin
- Makerua
- Shannon
- Moutoa
- Koputaroa
- Moutoa North
- Foxton Beach
- General
- Pohangina Catchment
- Mangaone Stream
- Small tributaries
- Taonui Basin



500 m

AEGIS MAP

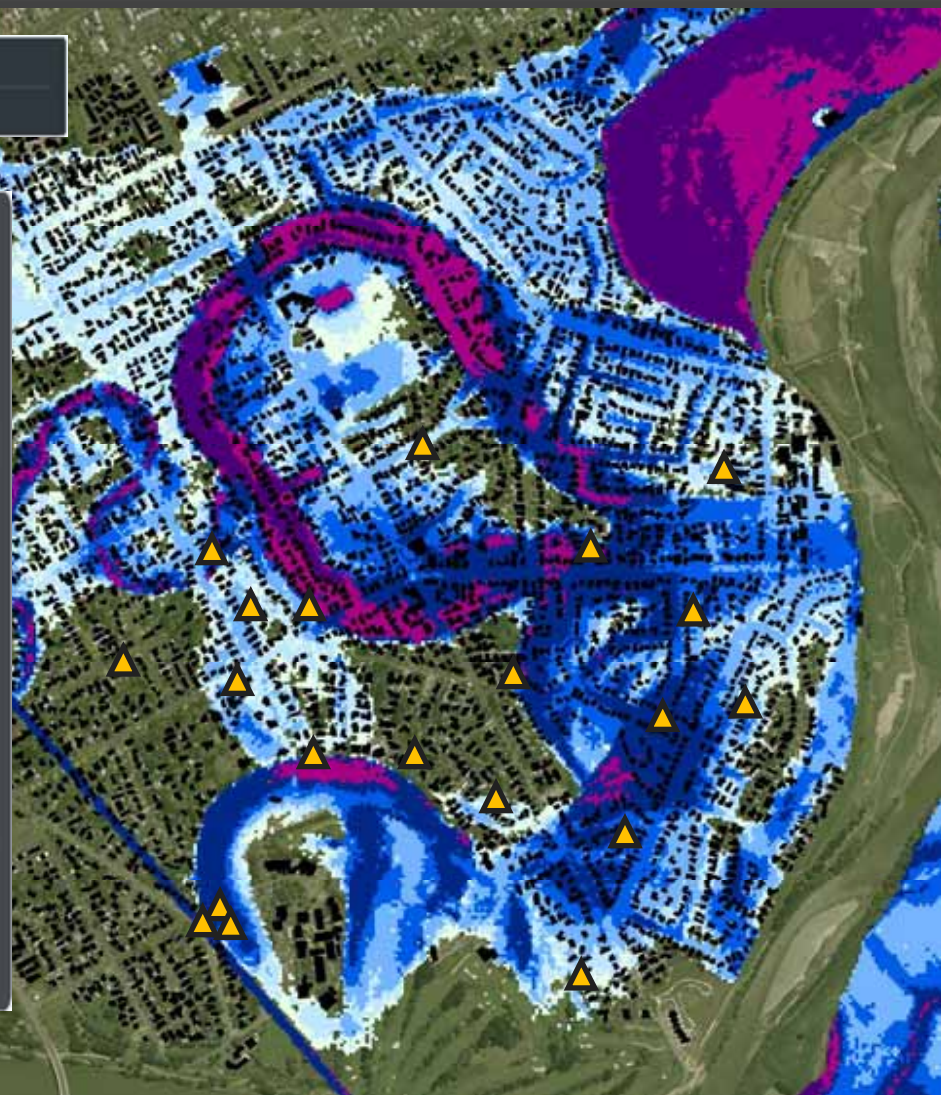
Powered by ArcGIS Server



Flood Catchments

Layer Visibility

- Lower Manawatu
- Lower Manawatu River
- Whakarongo/Staces Road
- Palmerston North City
- Taonui Basin
- Makerua
- Shannon
- Moutoa
- Koputaroa
- Moutoa North
- Foxton Beach
- General
- Pohangina Catchment
- Mangaone Stream
- Small tributaries
- Taonui Basin



Flood Scenario: Create a new incident



AEGIS MAP

Powered by ArcGIS Server



Incidents & Events

- Report & Monitor Incidents/Events
- Events & Incidents Maps
- Response Status
- Incident Facilities Status
- Incident/Event History

Incidents
Events



AEGIS MAP

Powered by ArcGIS Server



Monitor Incidents



New

Open Incidents

- Incident #1
- Incident #2
- Incident #3

Close Incident



AEGIS MAP

Powered by ArcGIS Server

Current Action: Event



Point

Line

Polygon



AEGIS MAP

Powered by ArcGIS Server

Current Action: Event



Point

Line

Polygon



AEGIS MAP

Powered by ArcGIS Server



New Incidents

Incident Classification

- Civil Disturbance
- Criminal Activity
- Fire
- Hazardous Material
- Air Accident
- Marine Incident
- Rail Incident
- Vehicle Incident
- Medical Incident
- Natural Disaster
- Hydro-Meteorological
- Infestation

Incident Type

- Drizzle
- Drought
- Road Flooding
- Flood
- Fog
- Hail
- Inversion
- Rain

Start Time: Hr Min

Start Date:

Description:

Location:

Direct Line Distance:

Comments:

Agencies On Scene:

No of People Affected:

ICP Location:

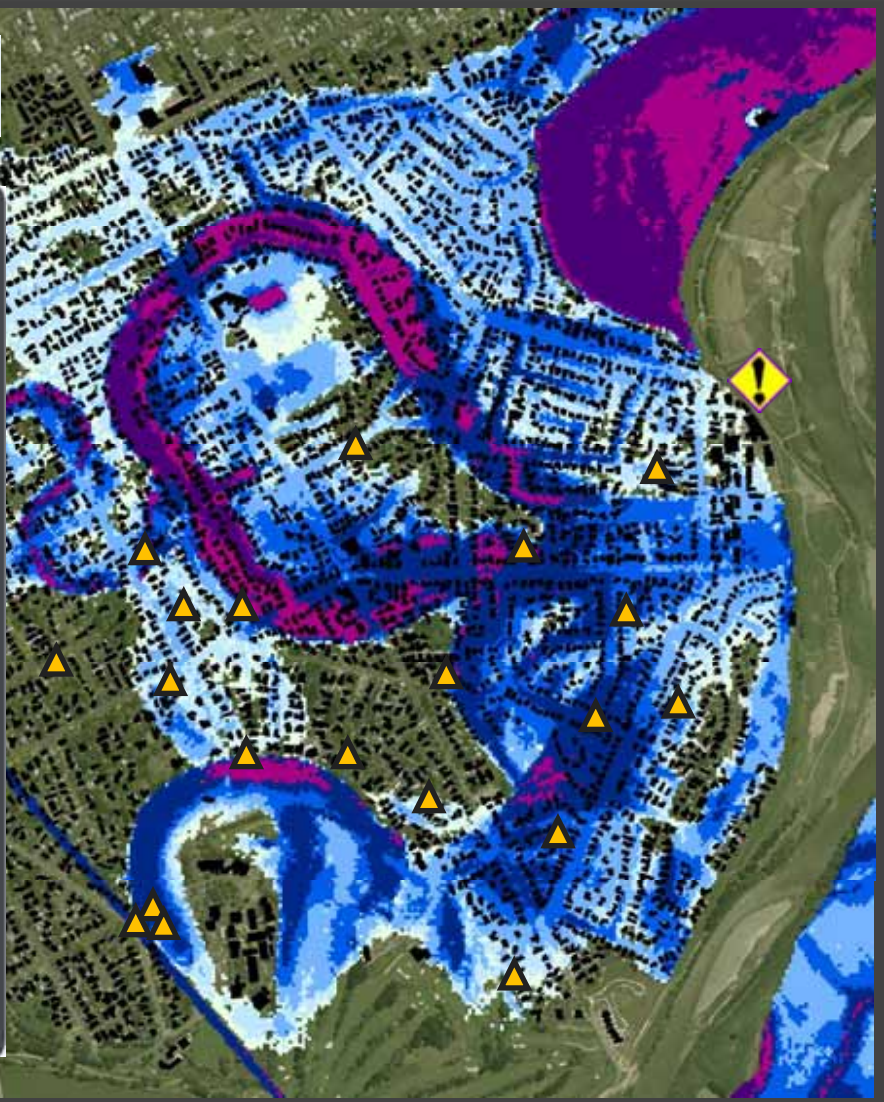
Incident Controller:



Map ICP Location

Next

DRAFT



Flood Scenario: Locate an ICP

The screenshot displays the AEGIS MAP interface, which is powered by ArcGIS Server. The main map area shows a flood scenario with various colored regions (blue, purple, pink) and numerous yellow triangle markers. A white circle with a black dot is labeled 'ICP' (Incident Control Point) on the map. A 'New Incidents' form is overlaid on the left side of the map. The form includes the following fields and options:

- Incident Classification:** A dropdown menu with options: Civil Disturbance, Criminal Activity, Fire, Hazardous Material, Air Accident, Marine Incident, Rail Incident, Vehicle Incident, Medical Incident, Natural Disaster, Hydro-Meteorological (highlighted), and Infestation.
- Incident Type:** A dropdown menu with options: Drizzle, Drought, Road Flooding, Flood (highlighted), Fog, Hail, Inversion, and Rain.
- Start Time:** Fields for Hr and Min.
- Start Date:** A calendar icon.
- Description:** A text input field.
- Location:** A text input field.
- Direct Line Distance:** A text input field.
- Comments:** A text input field.
- Agencies On Scene:** A text input field.
- No of People Affected:** A text input field.
- ICP Location:** A text input field.
- Incident Controller:** A text input field.

At the bottom of the form, there is a 'Map ICP Location' button and a 'Next' button with an orange arrow pointing to it. The word 'DRAFT' is visible in the bottom left corner of the form area.

AEGIS MAP

Powered by ArcGIS Server



New Incidents

Lifeline Assets

Status
Operational
Non-operational

Impact:

Alternative Route:

Expected Resolution:

Scheduled Outage Time:

Subscribers Affected:

Welfare Centres

Number of People:

Affected:

In Isolation:

Registered:

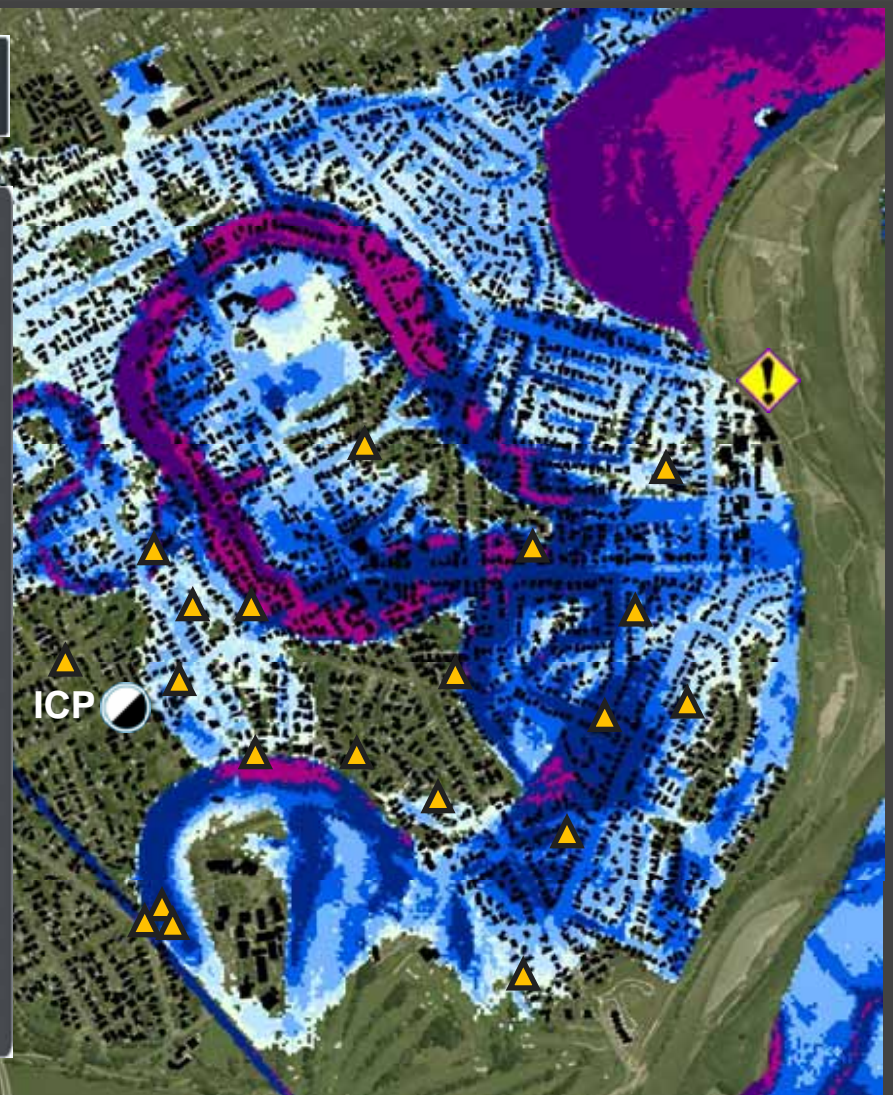
In Emergency Accommodation:

Welfare Centre Open:

Services Provided:

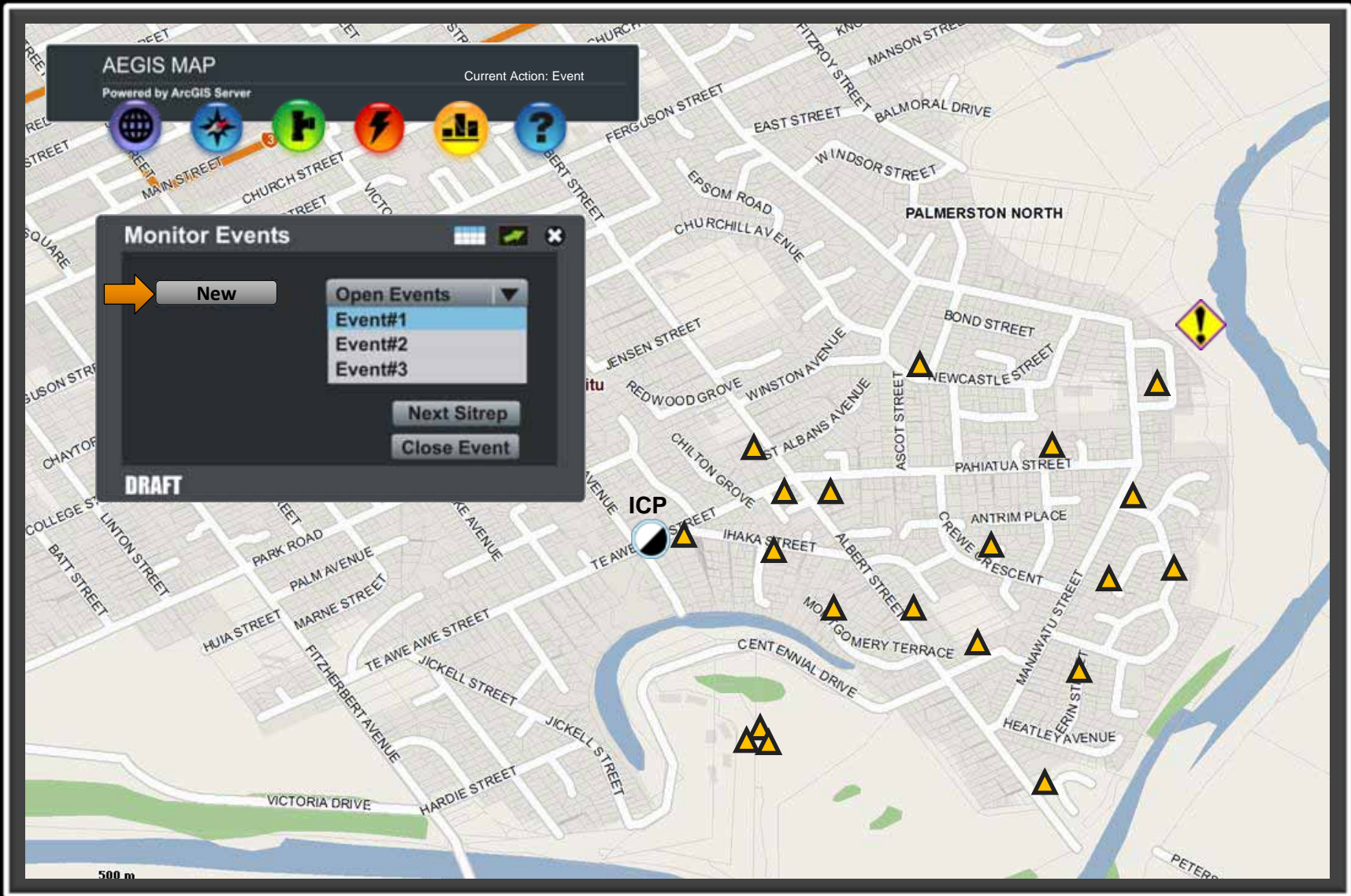
Previous OK

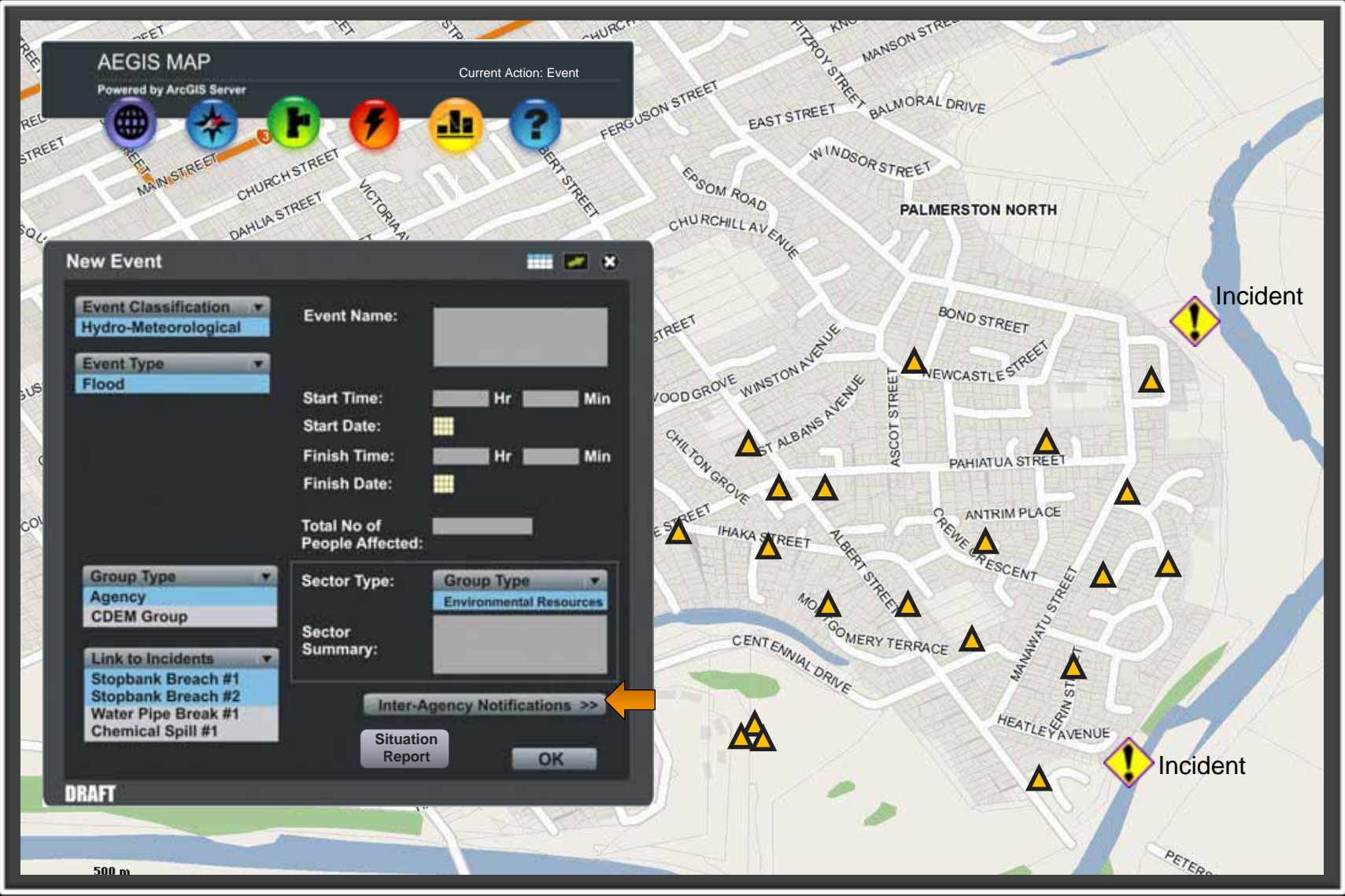
DRAFT



Flood Scenario: Create an event







Flood Scenario: Generate a Situation Report and notify Agencies

The screenshot displays the AEGIS MAP interface with a map of Palmerston North. A toolbar at the top contains several icons, with an orange arrow labeled '2' pointing to a lightning bolt icon. Two main panels are open:

- New Event Panel:** Contains fields for Event Classification (Hydro-Meteorological), Event Type (Flood), Event Name, Start/Finish Time and Date, Total No of People Affected, Group Type (Agency), Link to Incidents (Stopbank Breach #1, Stopbank Breach #2, Water Pipe Break #1, Chemical Spill #1), Sector Type (Environmental Resources), and Sector Summary. A 'Situation Report' button is highlighted with an orange arrow labeled '1'. The status 'DRAFT' is shown at the bottom left.
- Inter-Agency Notifications Panel:** Lists agencies under four categories: CIVIL TASK GROUP, GAS and FUEL, HEALTH AUTHORITIES, TRANSPORT TASK GROUP, and COMMUNICATION. A yellow warning icon is visible on the map to the right.

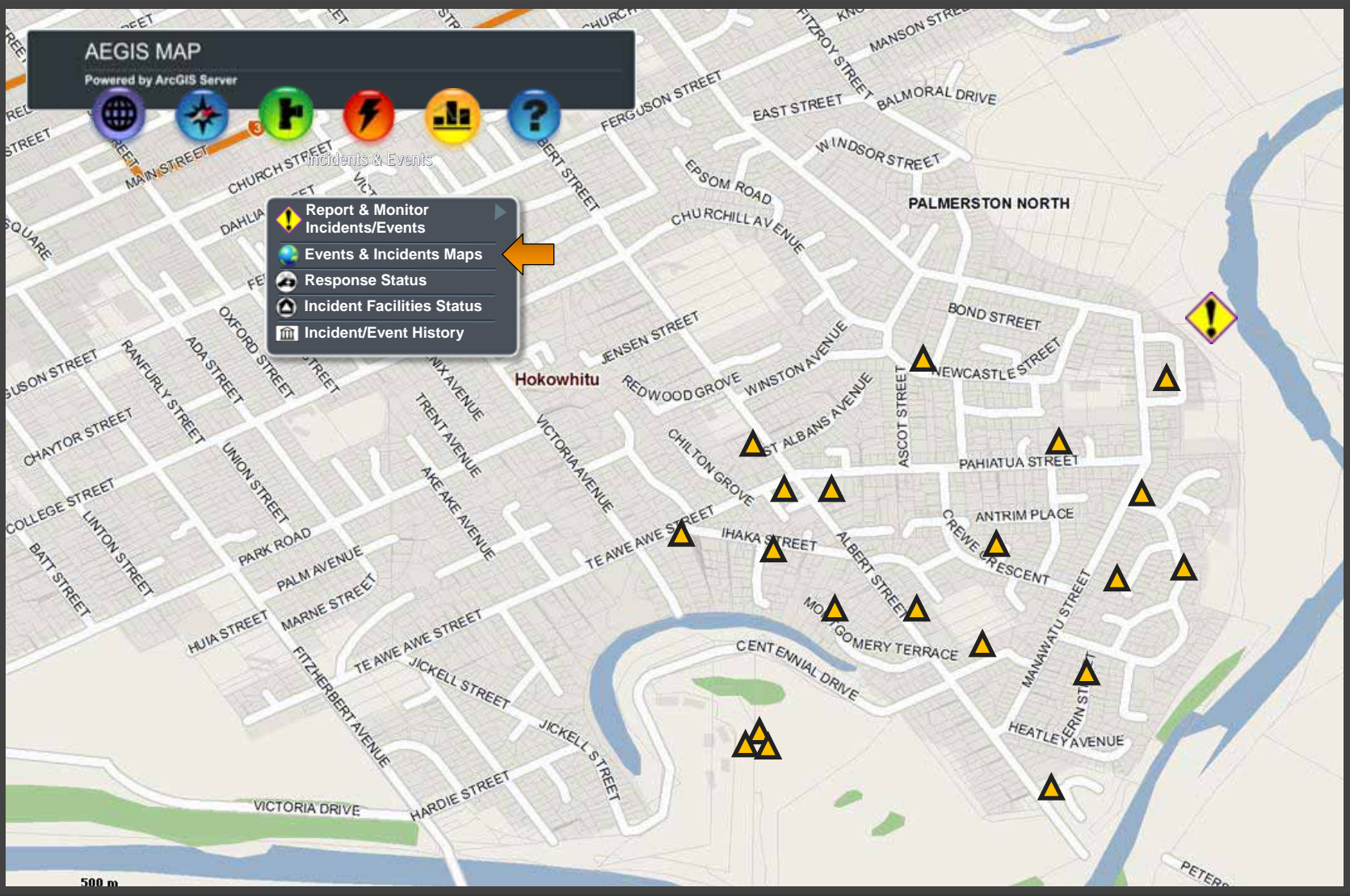
AEGIS MAP

Powered by ArcGIS Server

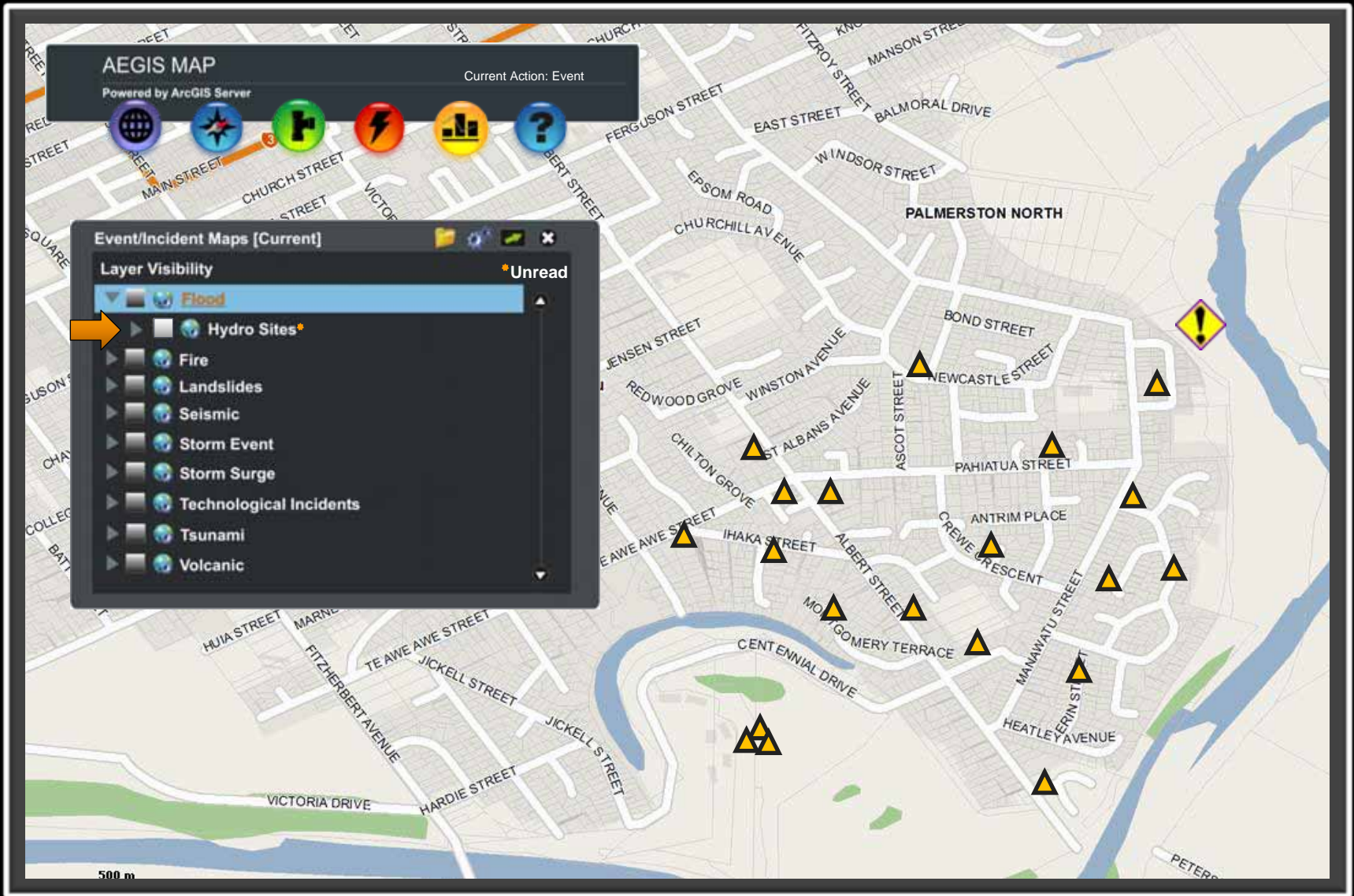


Incidents & Events

- Report & Monitor Incidents/Events
- Events & Incidents Maps
- Response Status
- Incident Facilities Status
- Incident/Event History



Flood Scenario: Show current river levels



AEGIS MAP

Powered by ArcGIS Server

Current Action: Event

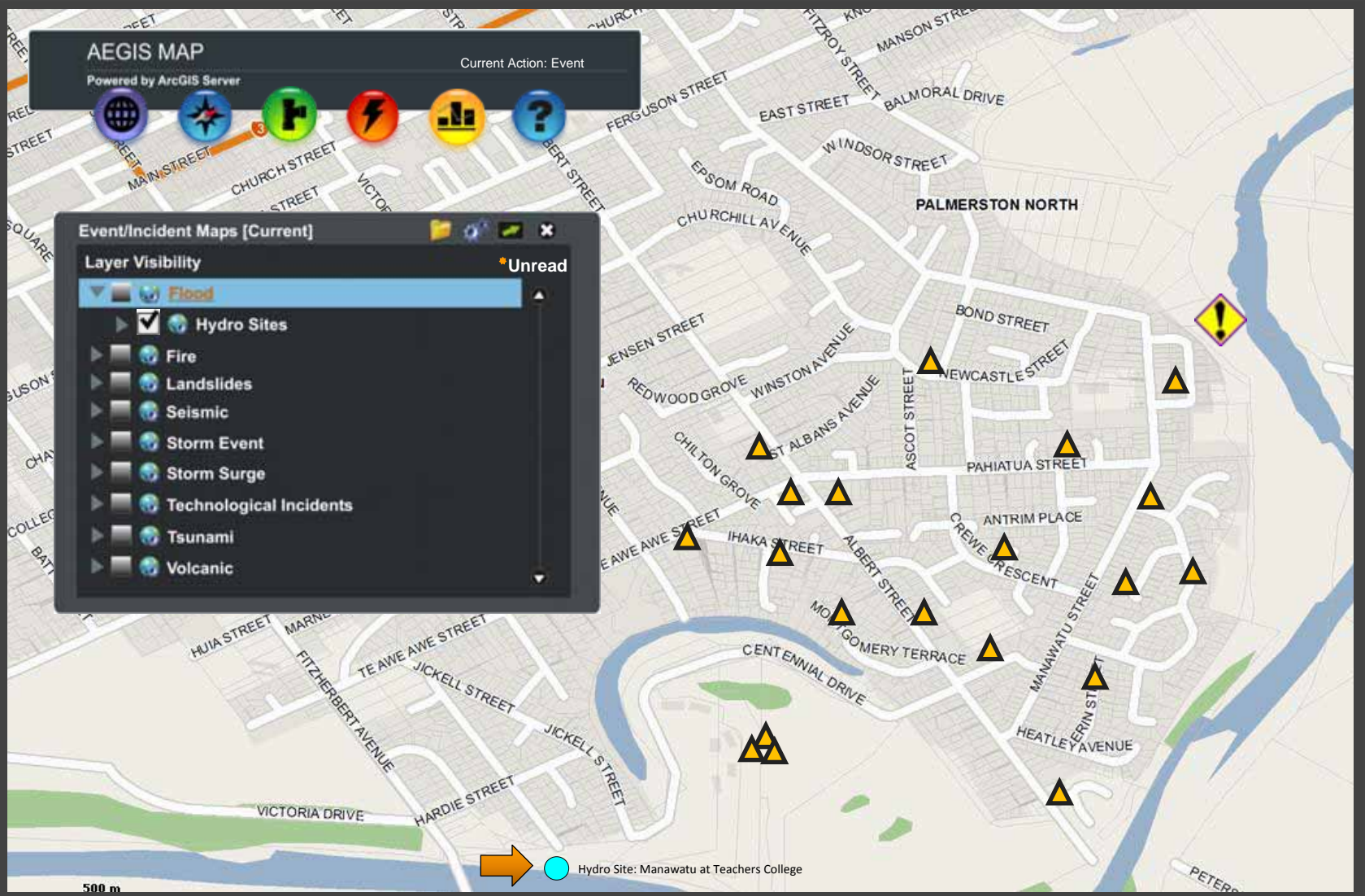


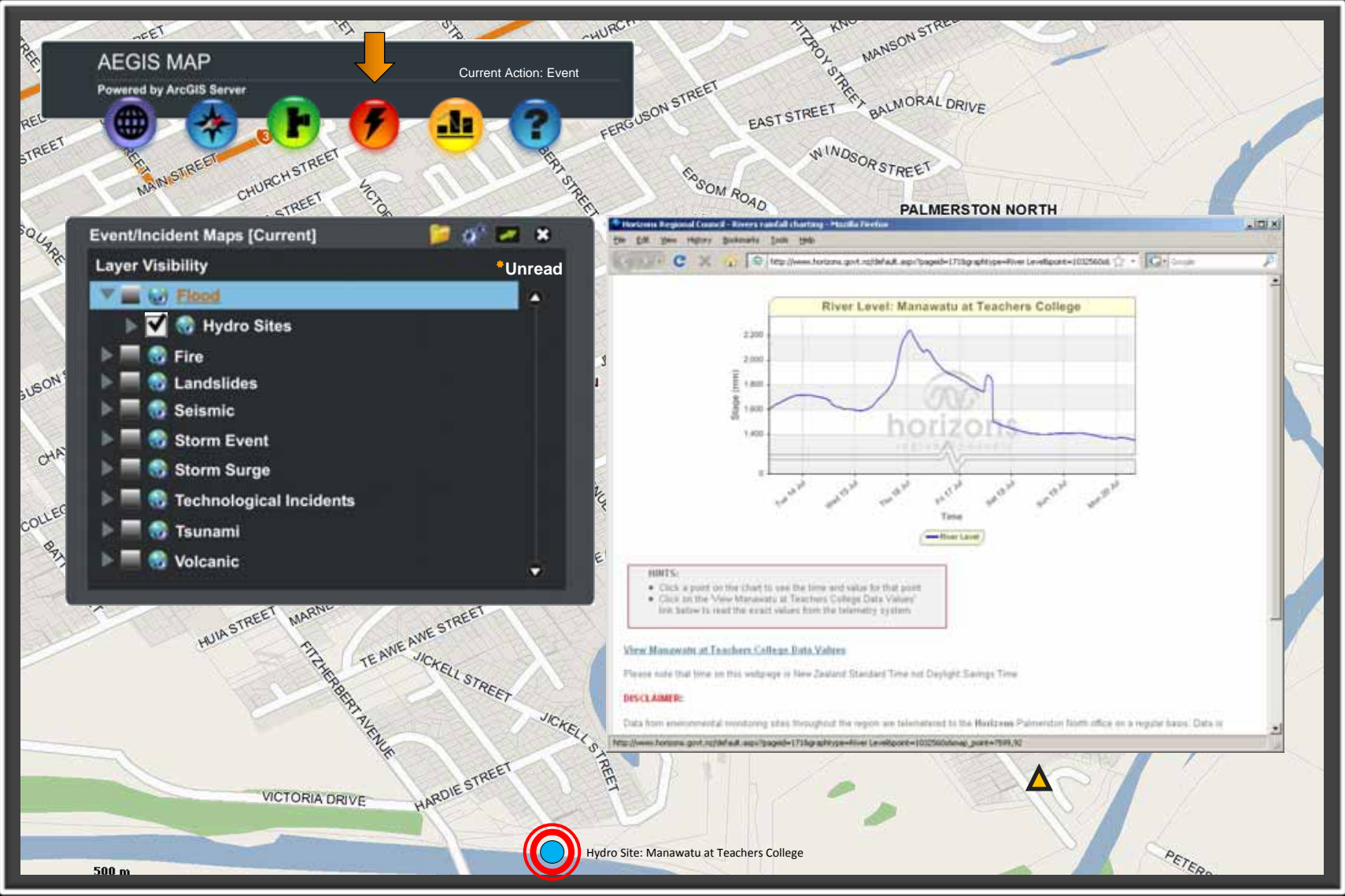
Event/Incident Maps [Current]

Layer Visibility

Unread

- Flood
- Hydro Sites
- Fire
- Landslides
- Seismic
- Storm Event
- Storm Surge
- Technological Incidents
- Tsunami
- Volcanic





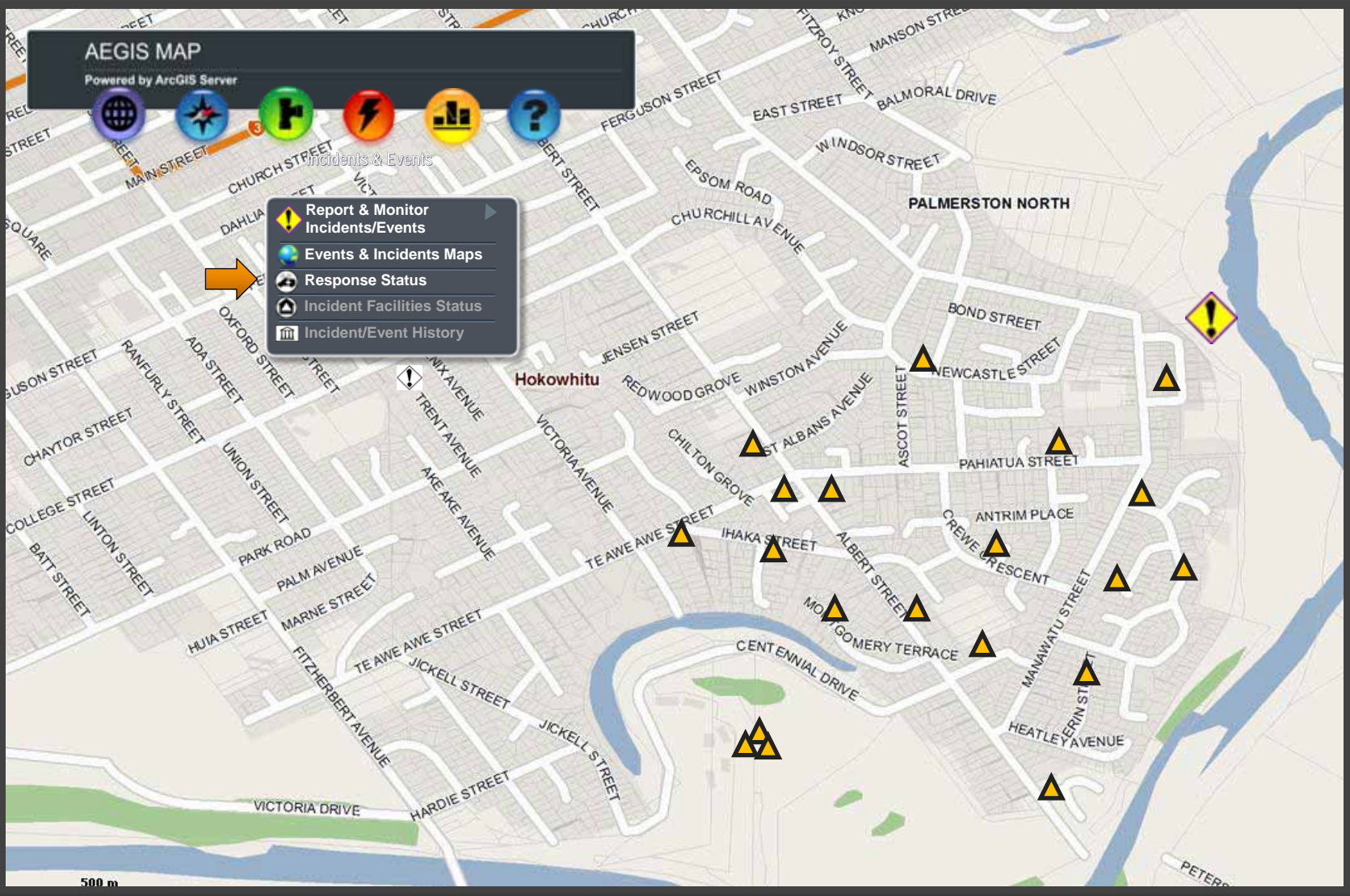
AEGIS MAP

Powered by ArcGIS Server

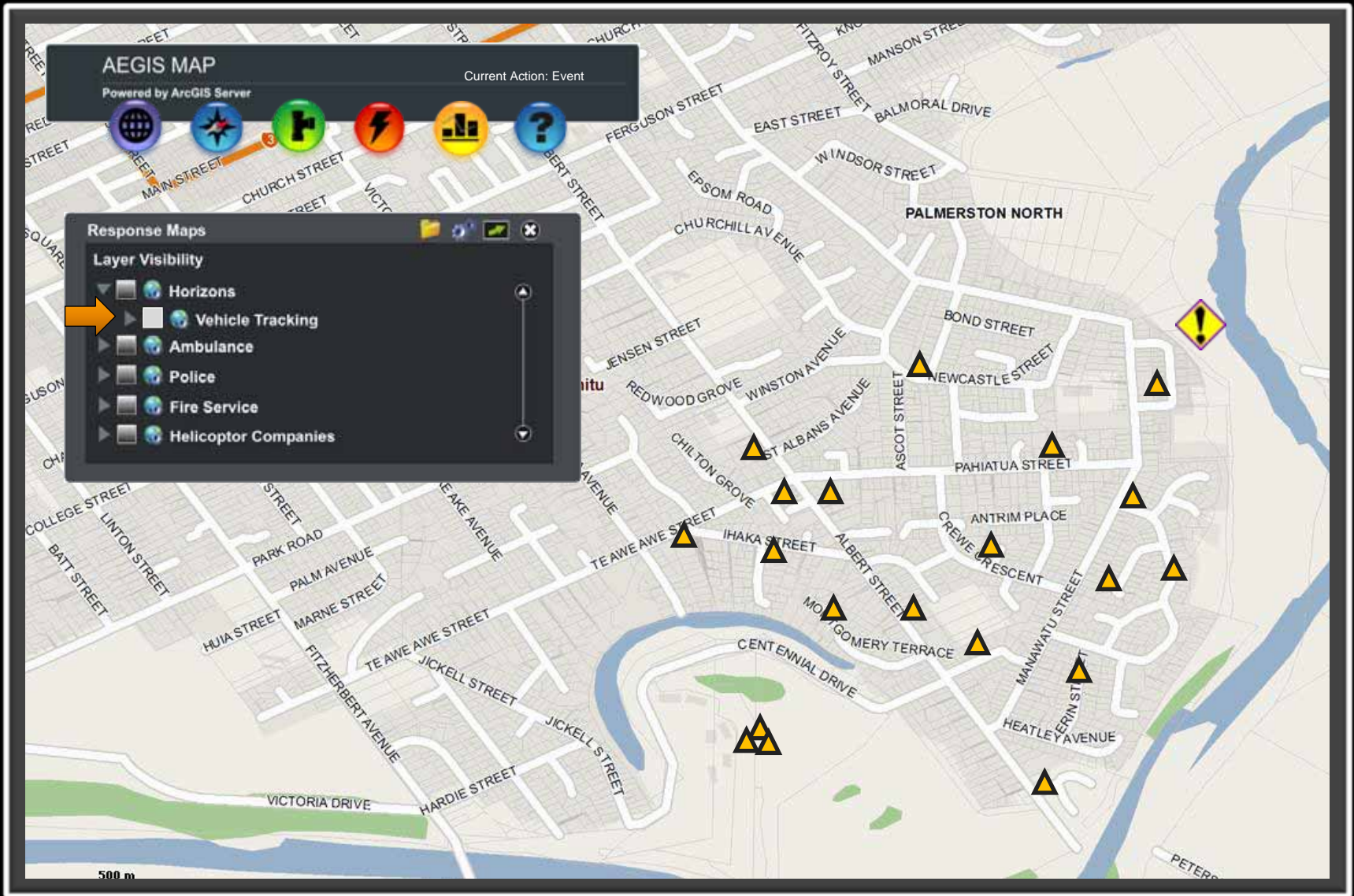


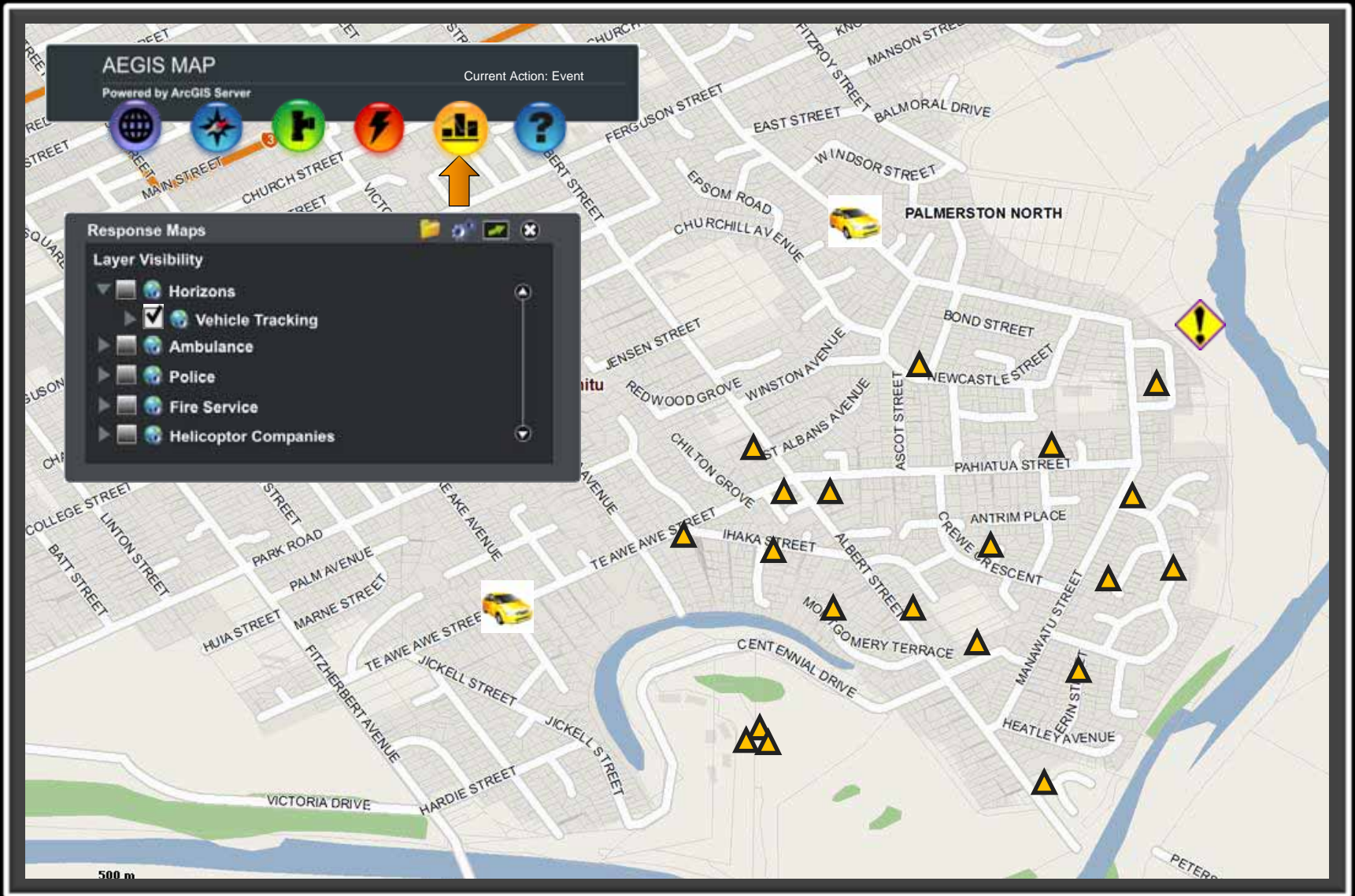
Incidents & Events

- Report & Monitor Incidents/Events
- Events & Incidents Maps
- Response Status
- Incident Facilities Status
- Incident/Event History



Flood Scenario: Locate staff





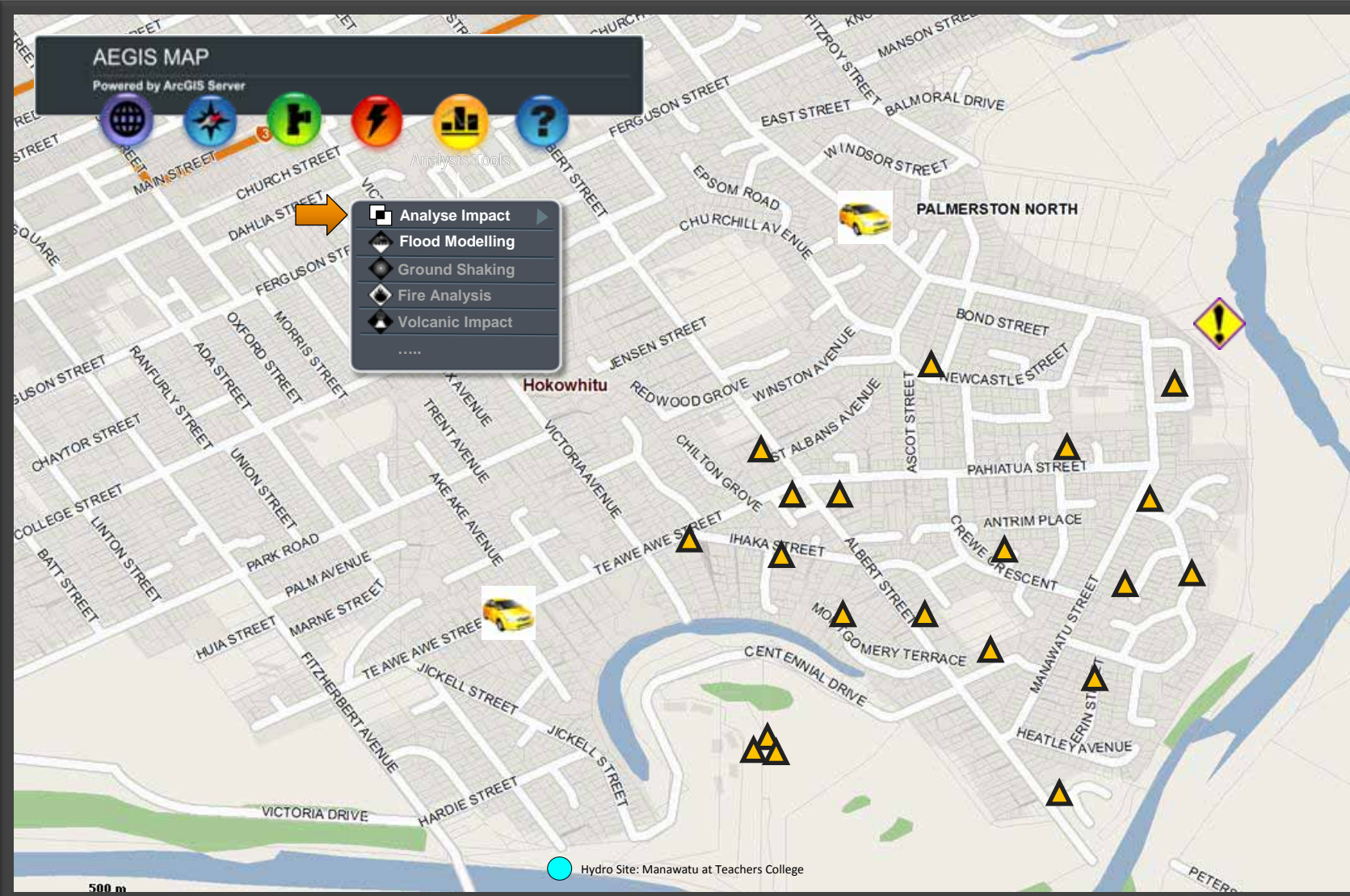
AEGIS MAP

Powered by ArcGIS Server



Analysis Tools

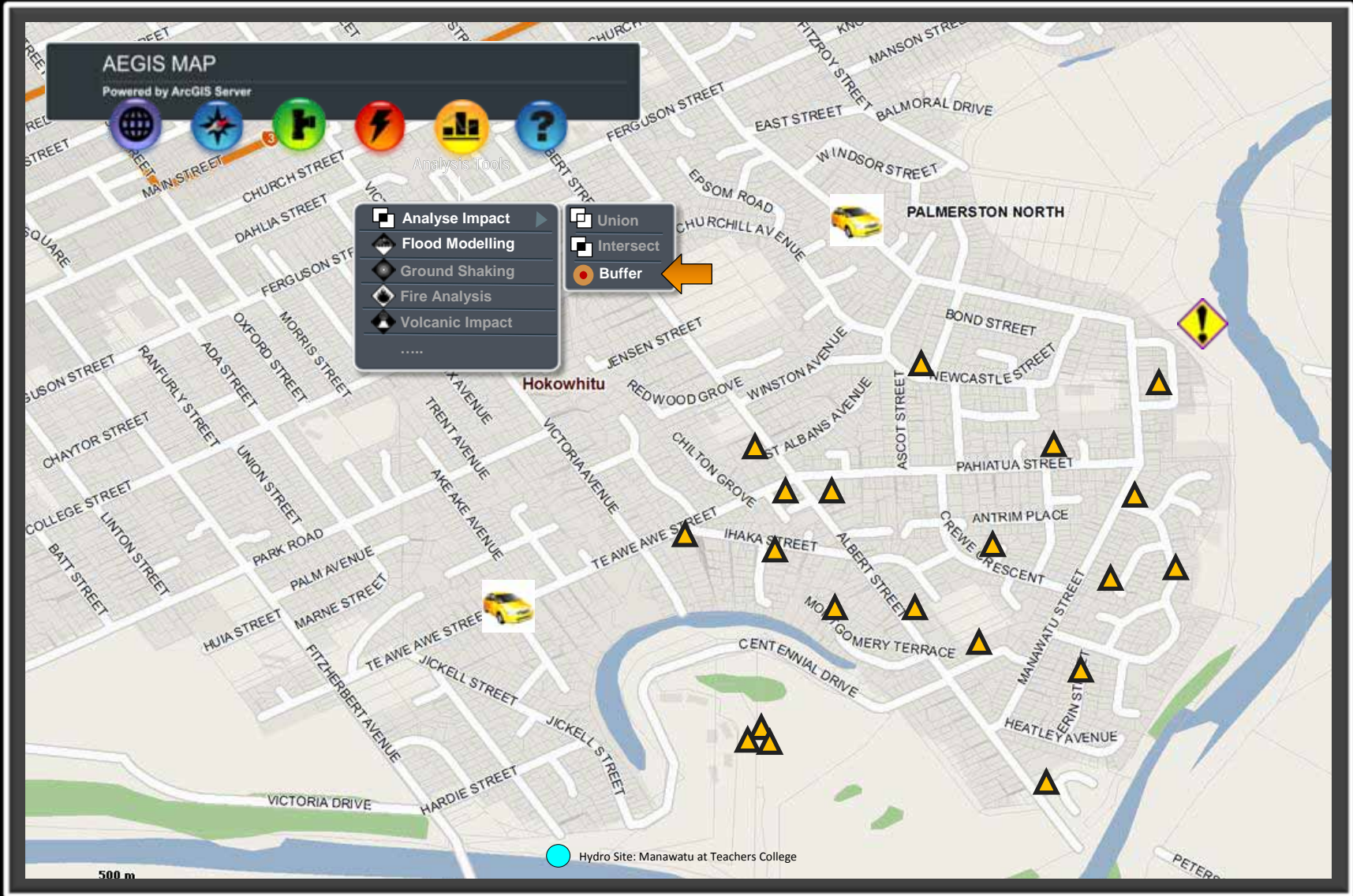
- Analyse Impact
- Flood Modelling
- Ground Shaking
- Fire Analysis
- Volcanic Impact
-



500 m

Hydro Site: Manawatu at Teachers College

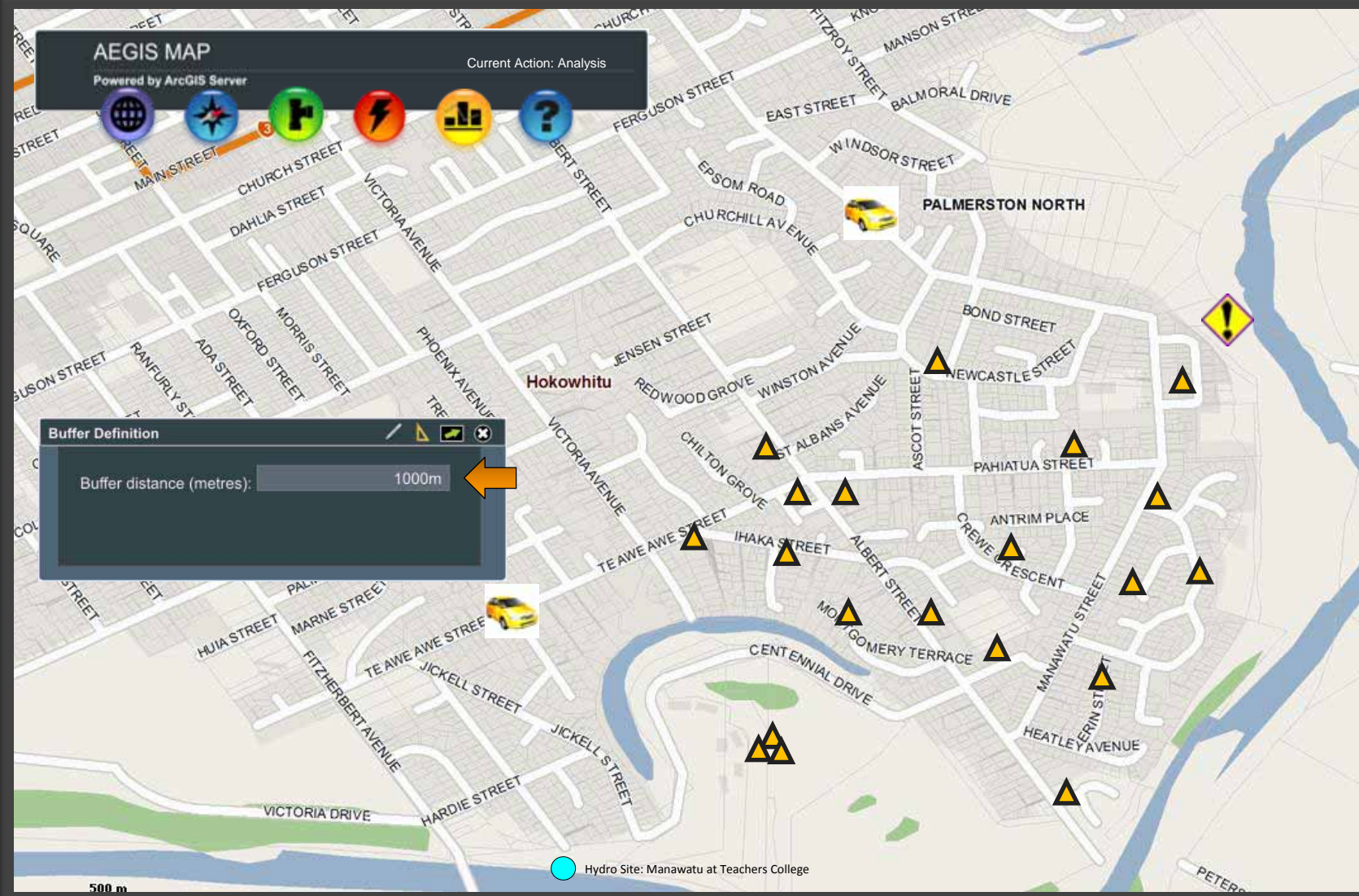
Flood Scenario: Identify impact zone



AEGIS MAP

Powered by ArcGIS Server

Current Action: Analysis



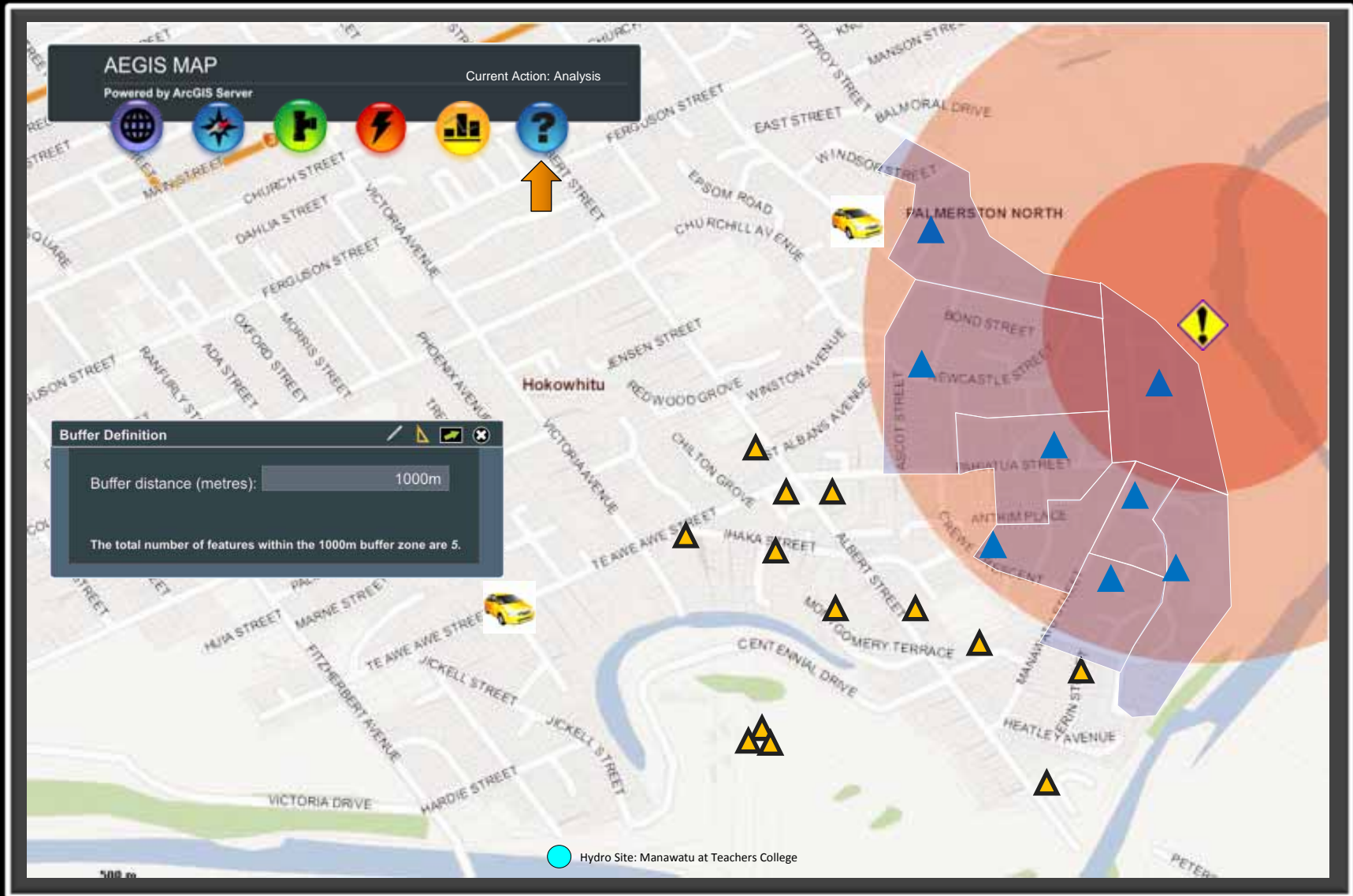
Buffer Definition

Buffer distance (metres):

500 m

Hydro Site: Manawatu at Teachers College

Flood Scenario: Electricity consumers affected



AEGIS MAP

AGENCY: Logged Out

THE END

For more information: adrienne.bonnington@horizons.govt.nz

