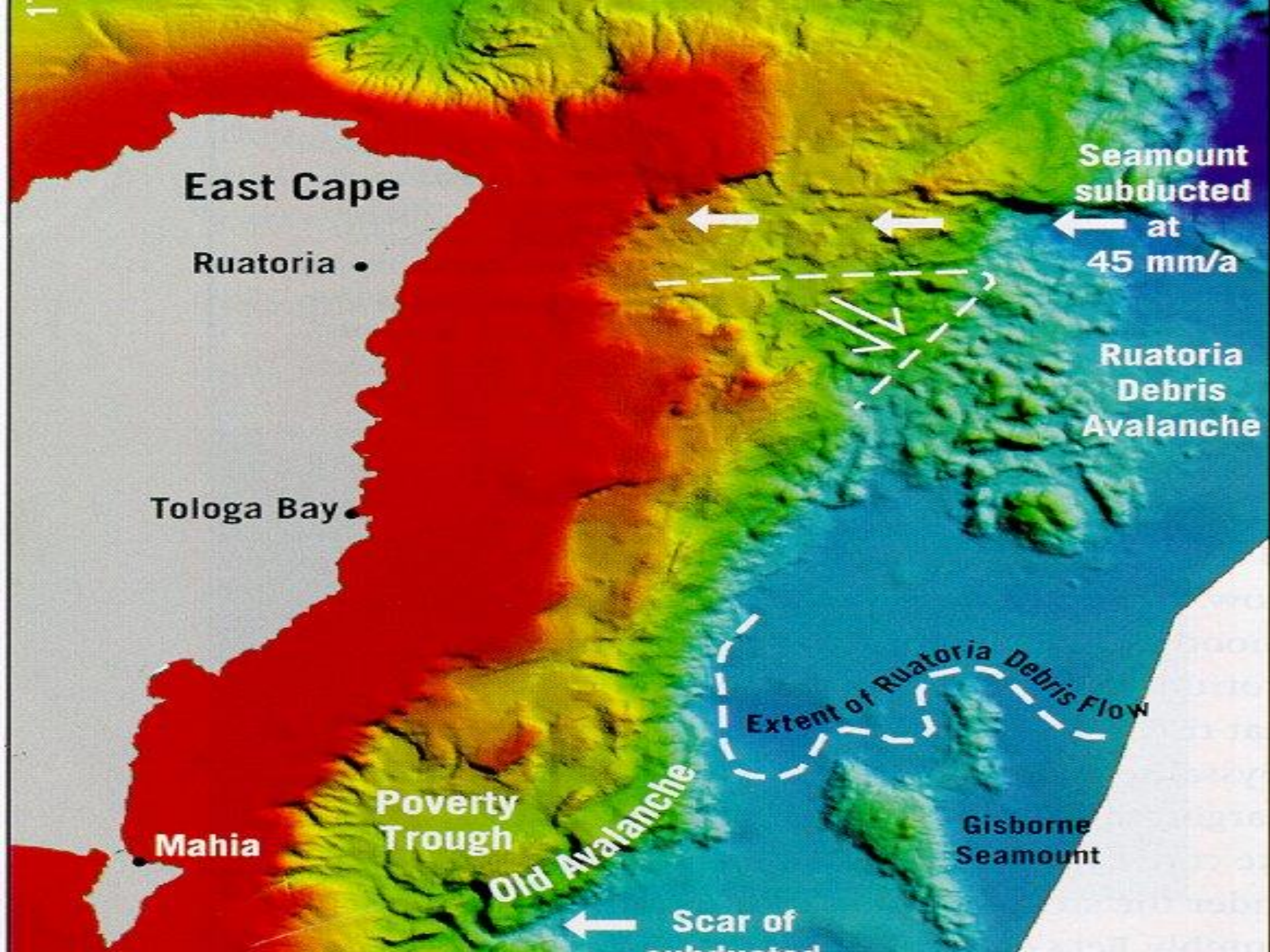


Tsunami Workshop Gisborne 2014

Gisbornes solution to evacuation zones



East Cape

Ruatoria •

Tologa Bay •

Mahia •

**Poverty
Trough**

Old Avalanche

**Seamount
subducted
at
45 mm/a**

**Ruatoria
Debris
Avalanche**

Extent of Ruatoria Debris Flow

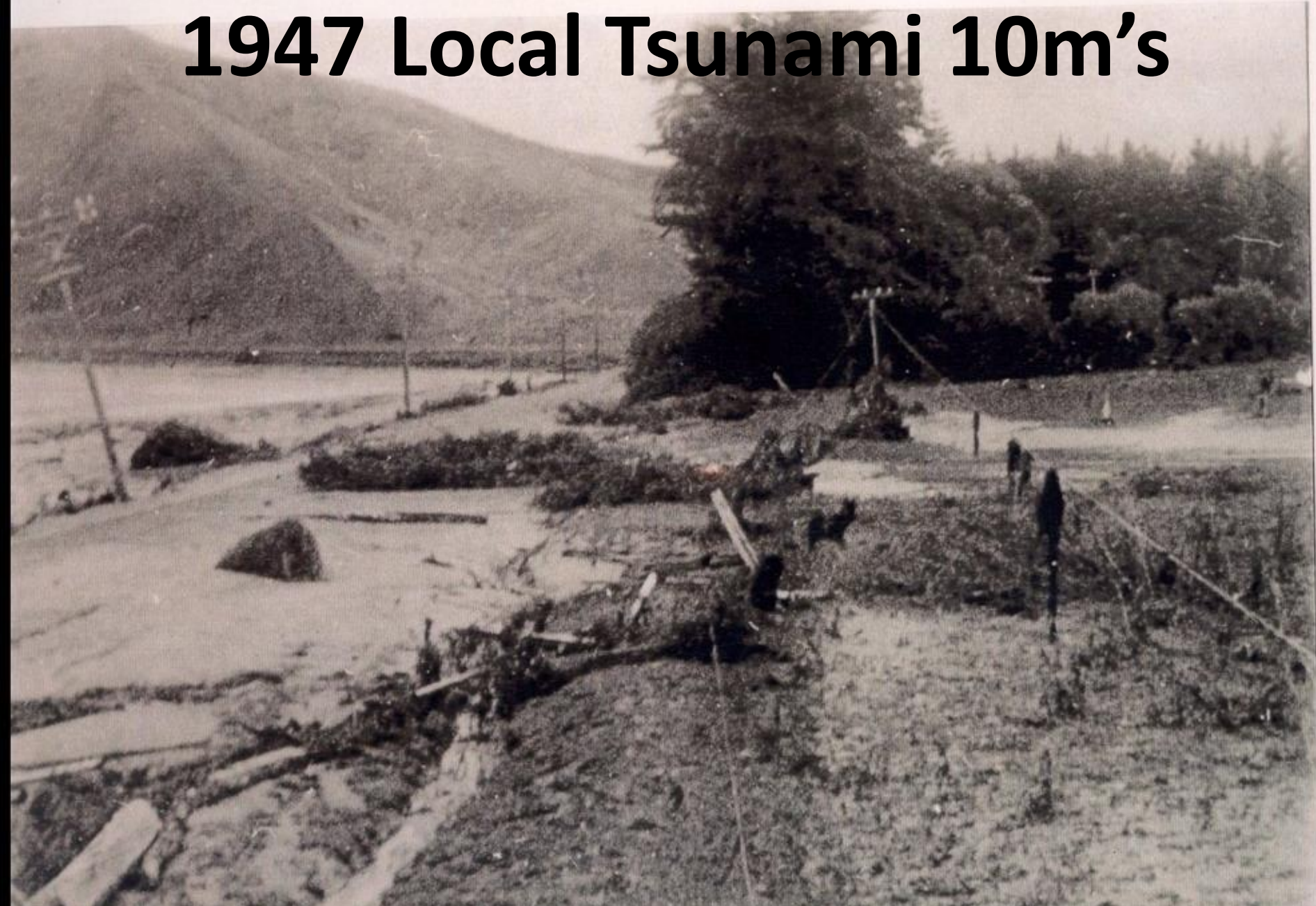
**Gisborne
Seamount**

**Scar of
subducted**

1960 Chile Tsunami



1947 Local Tsunami 10m's



1947 Fish from the Tata bar

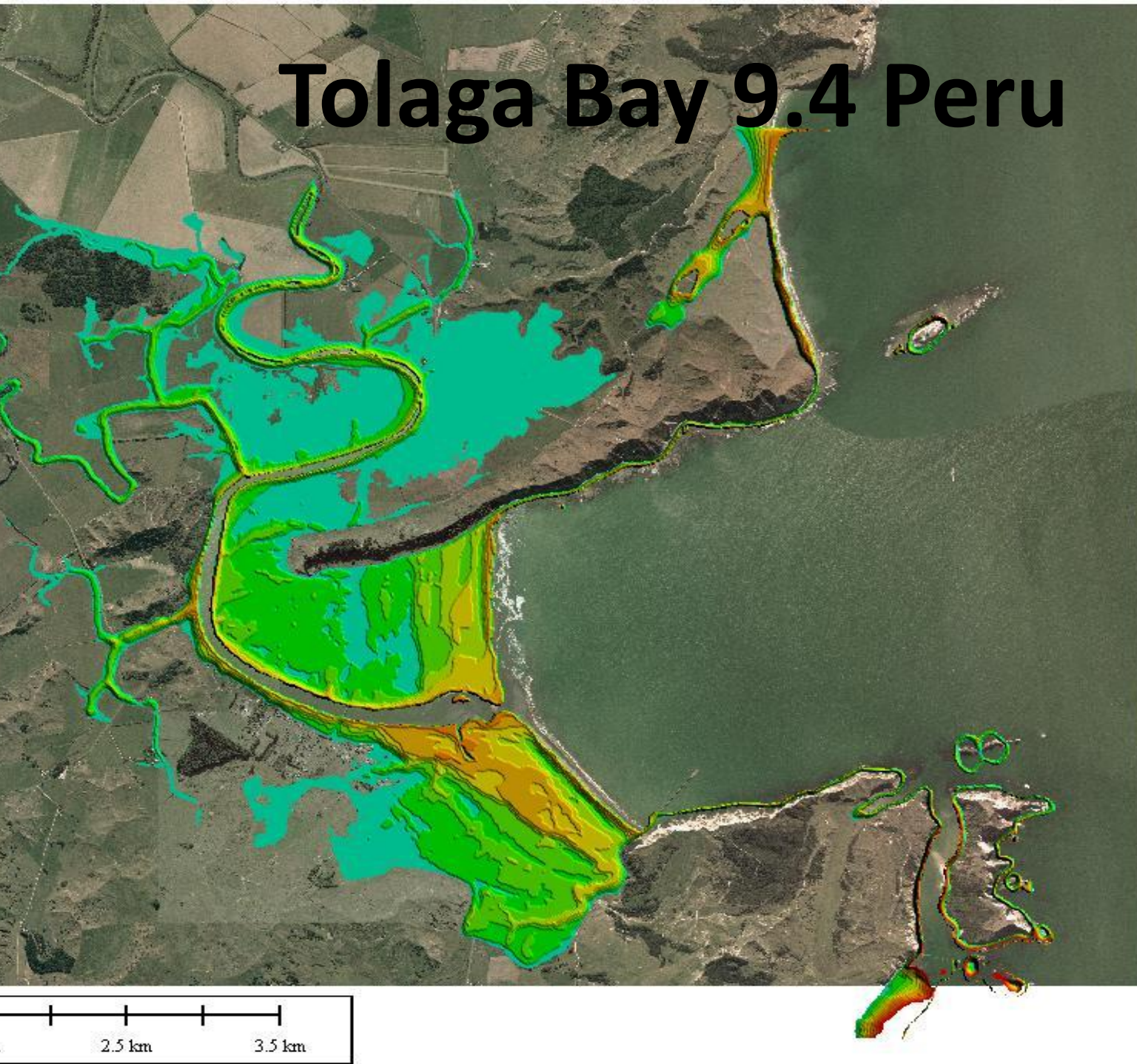


History of Development

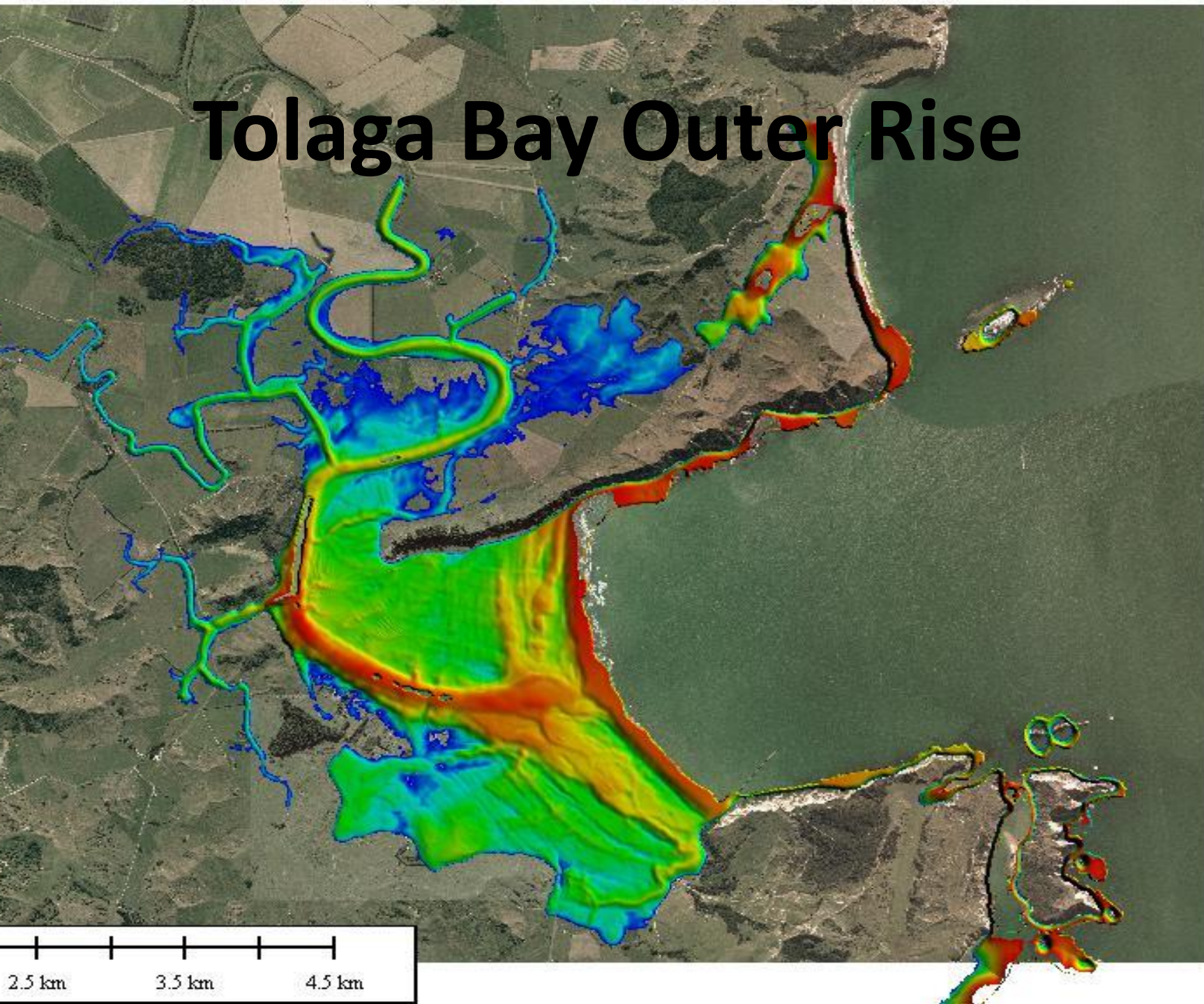
- Had maps since early 90's based on 2km's or 20m's
- Some 1 some 2 zones and used shaded line map
- Evolved into A3 line maps with instructions on back
- 2009 report allowed rationalization of zones for City and Wainui (which remains the only area with 2 zones)
- 2012 report allowed rationalization of coastal communities North of the City and all reduced to 1 zone
- Now use aerial map as photocopiers much better quality
- Allows cheap mass production and regular distribution
- Tangaroa planning assisted the development of traffic management plan
- No red zone, no one knows what it is, just say "GET OFF THE BEACH"

So why do we only have 1 zone?
With 1 exception

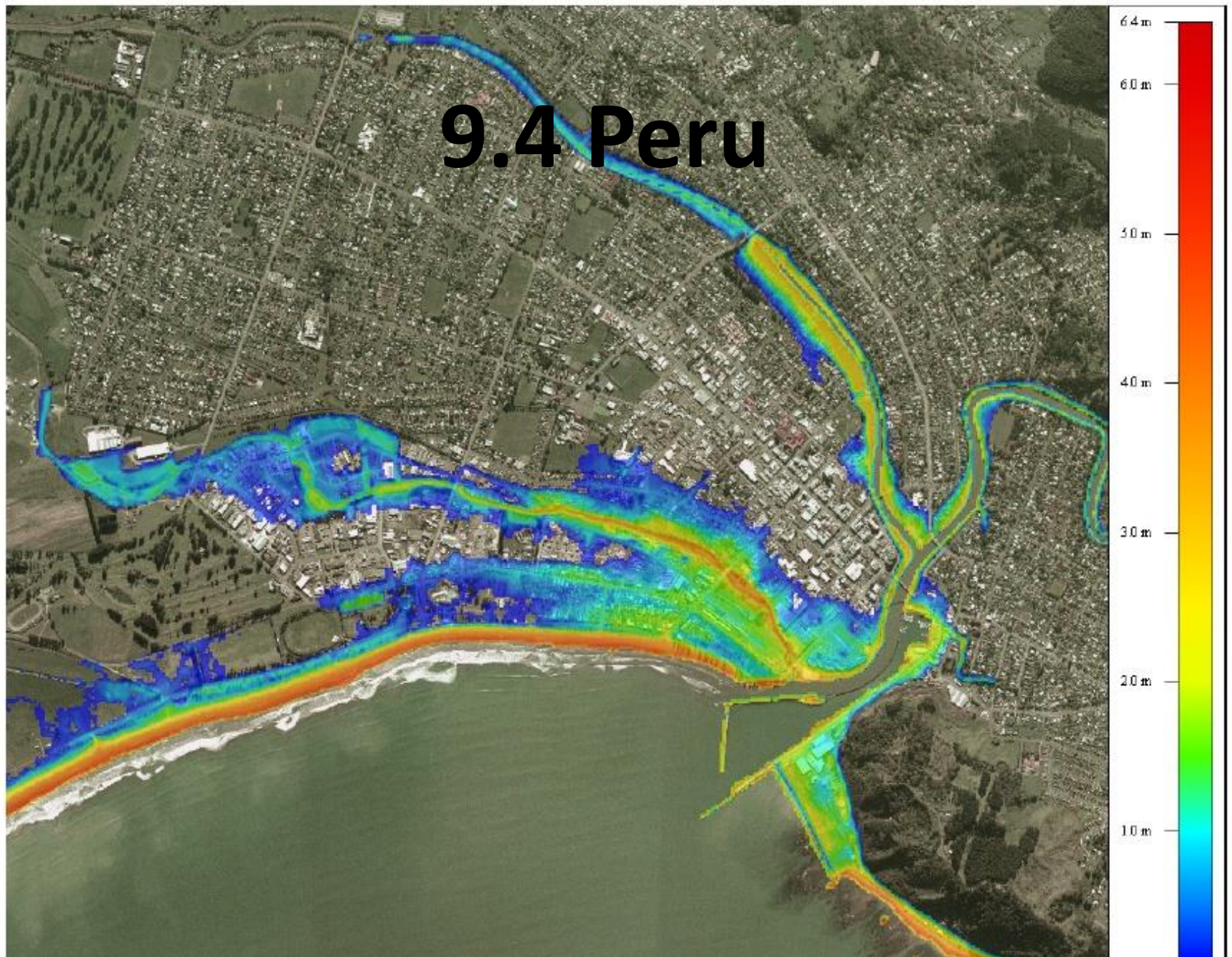
Tolaga Bay 9.4 Peru



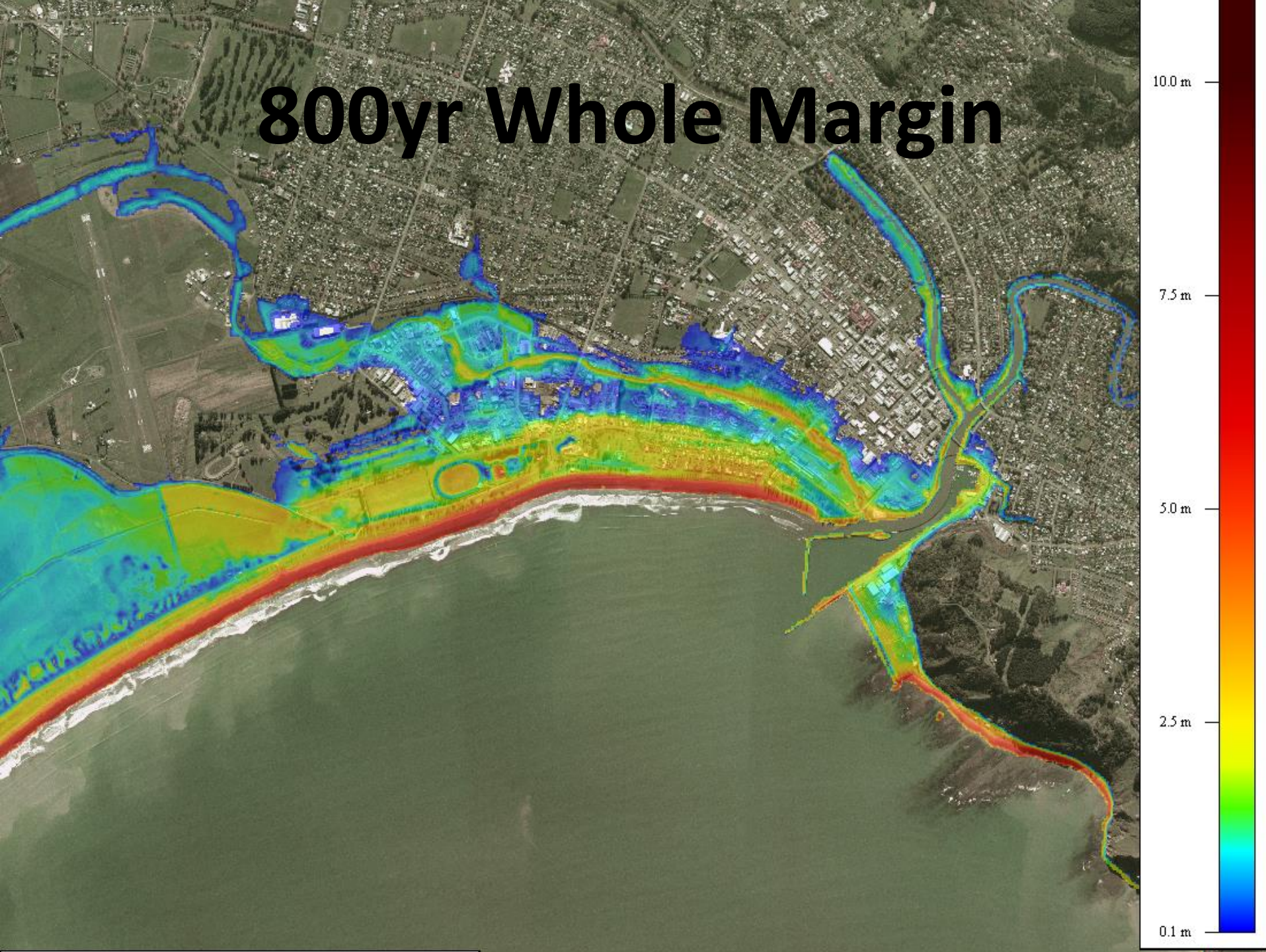
Tolaga Bay Outer Rise



9.4 Peru



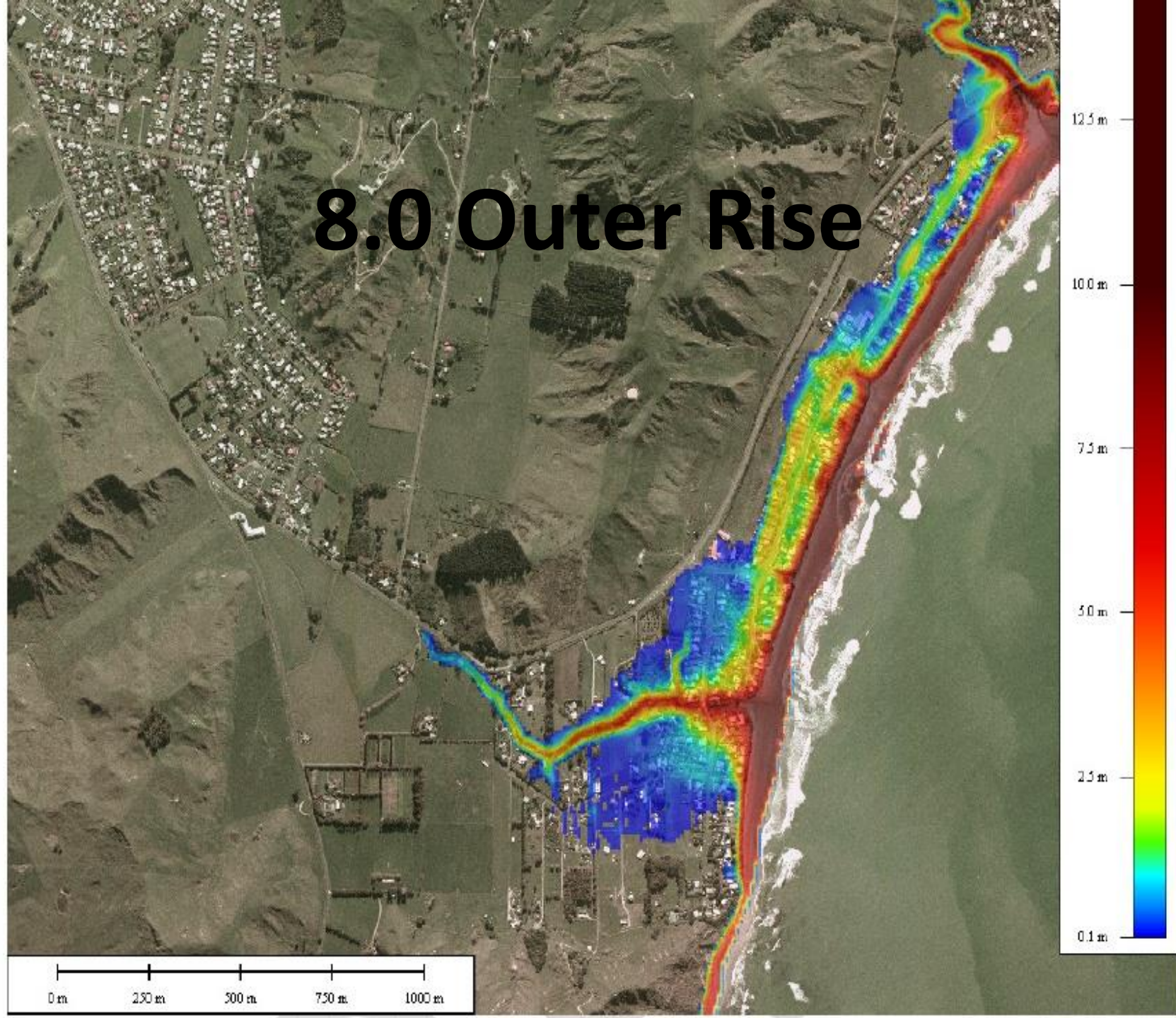
800yr Whole Margin



9.4 Peru



8.0 Outer Rise





FORSTER STREET

COOK STREET

Uawa River

TAUWHA REPAIRS ROAD

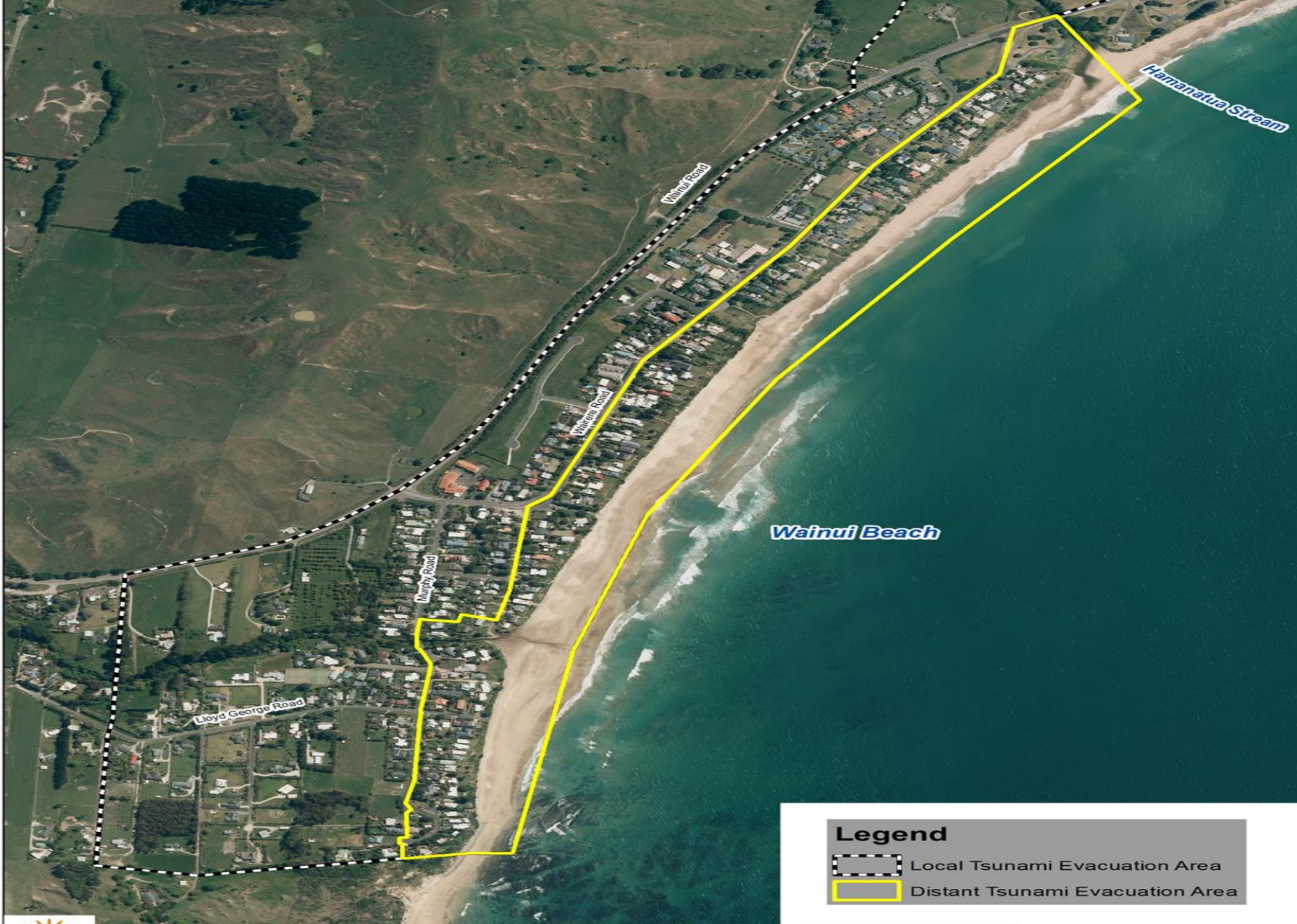
MAIN ROAD

WHARF ROAD

Tolaga Bay







Legend

 Local Tsunami Evacuation Area

 Distant Tsunami Evacuation Area



WAINUI TSUNAMI EVACUATION AREAS

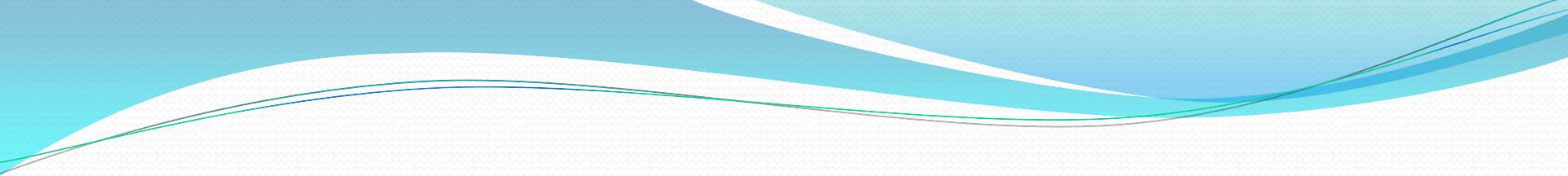
Name: Tsunami
Path: X:\projects\tsunami.mxd
Date: 27/10/2014
User: mdc

Contains Crown Copyright Data -
Sourced from Land Information NZ.
Orthophotography - Terralink & Aerial Surveys



GISBORNE
EMERGENCY MANAGEMENT





Handout of instructions
example is for Wainui