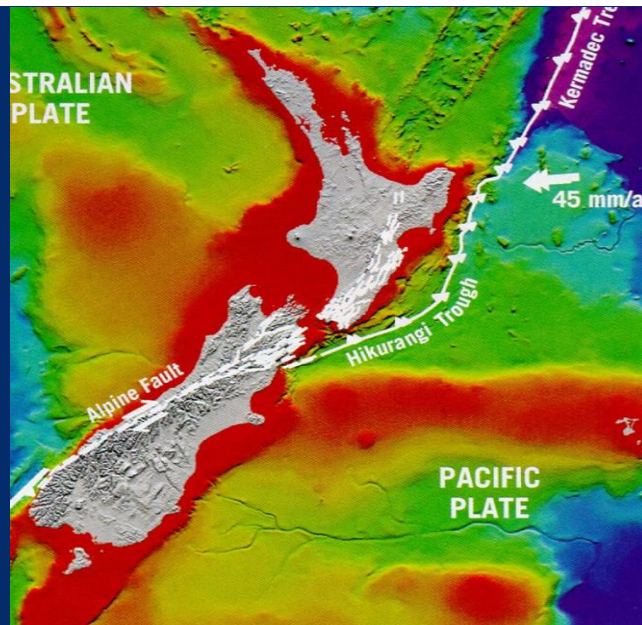


# Tsunami Land-Use & Evacuation Planning Workshop 2014

Purpose and expected outcomes



GISBORNE  
EMERGENCY MANAGEMENT

GROUP



Ministry of Civil Defence  
& Emergency Management  
Te Rākau Whakararumarua



HAWKE'S BAY  
EMERGENCY MANAGEMENT

GROUP





GISBORNE  
EMERGENCY MANAGEMENT

GROUP



HAWKE'S BAY  
EMERGENCY MANAGEMENT

GROUP





Japan

Image NASA  
Image © 2008 TerraMetrics

© 2007 Google™



new zealand

Subduction Zones beside  
Japan and New Zealand

# Tsunami Risk

Unlike Japan New Zealand's historic records are short – they only span **200** years and we are still learning about our risks.

It can make it difficult to plan when the science is evolving.



*Tsunami - a Japanese word meaning "wave in the harbour"*

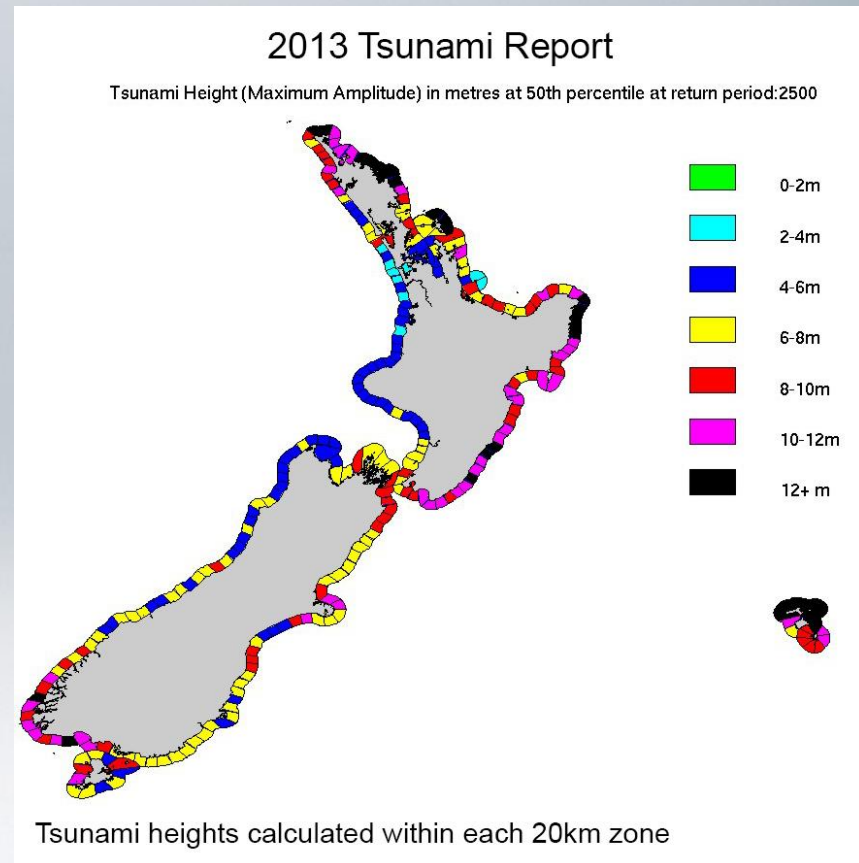
Japan's historic records span nearly **1,300** years, with some detailed accounts as early as 869.



# Review of Tsunami Hazard in New Zealand

As part of that learning MCDEM commissioned a national tsunami risk review, initially in 2005, and then in 2013.

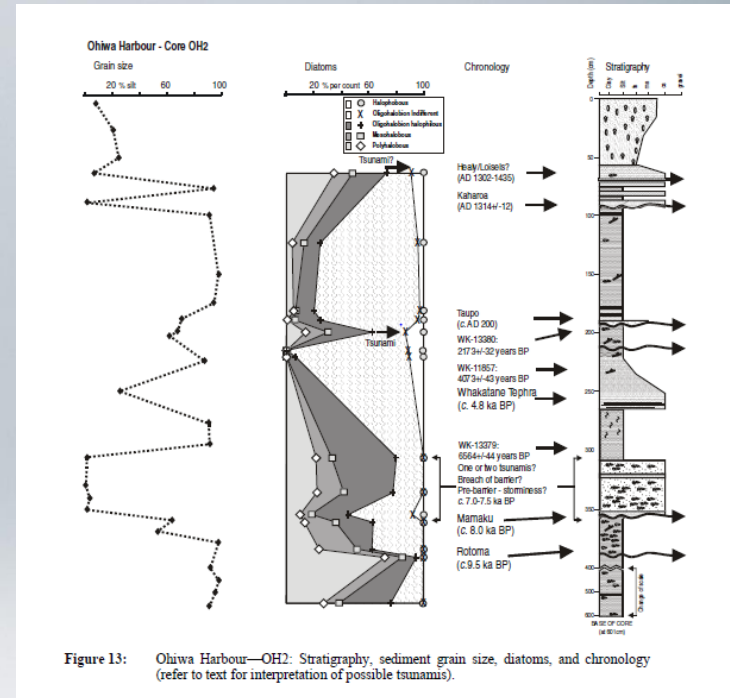
A large and important volume of research, this resulted in a general increase of estimated maximum amplitude wave heights across the country.

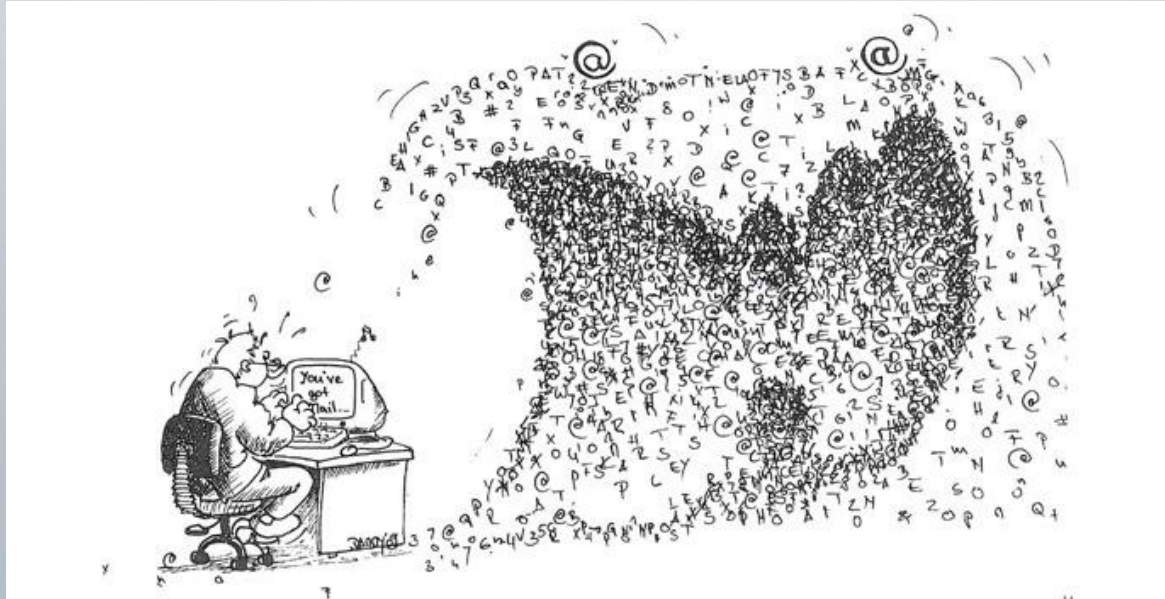


# Tsunami research

After 2005 many Groups also commissioned regional research, mapping and modelling, based on the 2005 estimated heights, and specific high risk sources for their areas.

We were at various stages with our research and modelling all across the country, and as work developed issues and challenges were arising





Then 2013 risk review was completed. It was like the new wave of information took out a lot of the plans and work completed in the previous 8 years, with the issues and challenges remaining.

Groups were left wondering just what should they do next?

So this joint workshop was recommended

# What do we want to achieve?

- To understand the **current state** of tsunami research/modelling, evacuation planning/mapping and land use planning across NZ
- To identify **issues and challenges** with evacuation planning/mapping and land use planning, and identify **opportunities/solutions** for resolving these
- To discuss and develop collective ways to work towards **national consistency** in the application of tsunami science.