

Strengthening Emergency Management:

A Roadmap for Investment and Implementation

This Roadmap operationalises the Government’s Response to the Inquiry into the Response to the North Island Severe Weather Events and will improve our ability to prepare for, respond to, and recover from all types of emergencies. It sets out the initiatives Cabinet has agreed to in-principle to transform the emergency management system so it can manage major to severe emergencies.

Focus areas


In September 2024 the Government agreed to the 14 headline recommendations from the Inquiry and also considered the findings from other events, reviews and inquiries. It approved 15 actions across five focus areas to improve the system, across all 4Rs – risk reduction, readiness, response and recovery.


- 

Give effect to the whole of society approach to emergency management
- 








Professionalise and build the capability and capacity of the emergency management workforce
- 

Drive a strategic focus on investment and implementation

- 

Support and enable local government to deliver a consistent minimum standard of emergency management across New Zealand
- 

Enable the different parts of the system to work better together at the national level

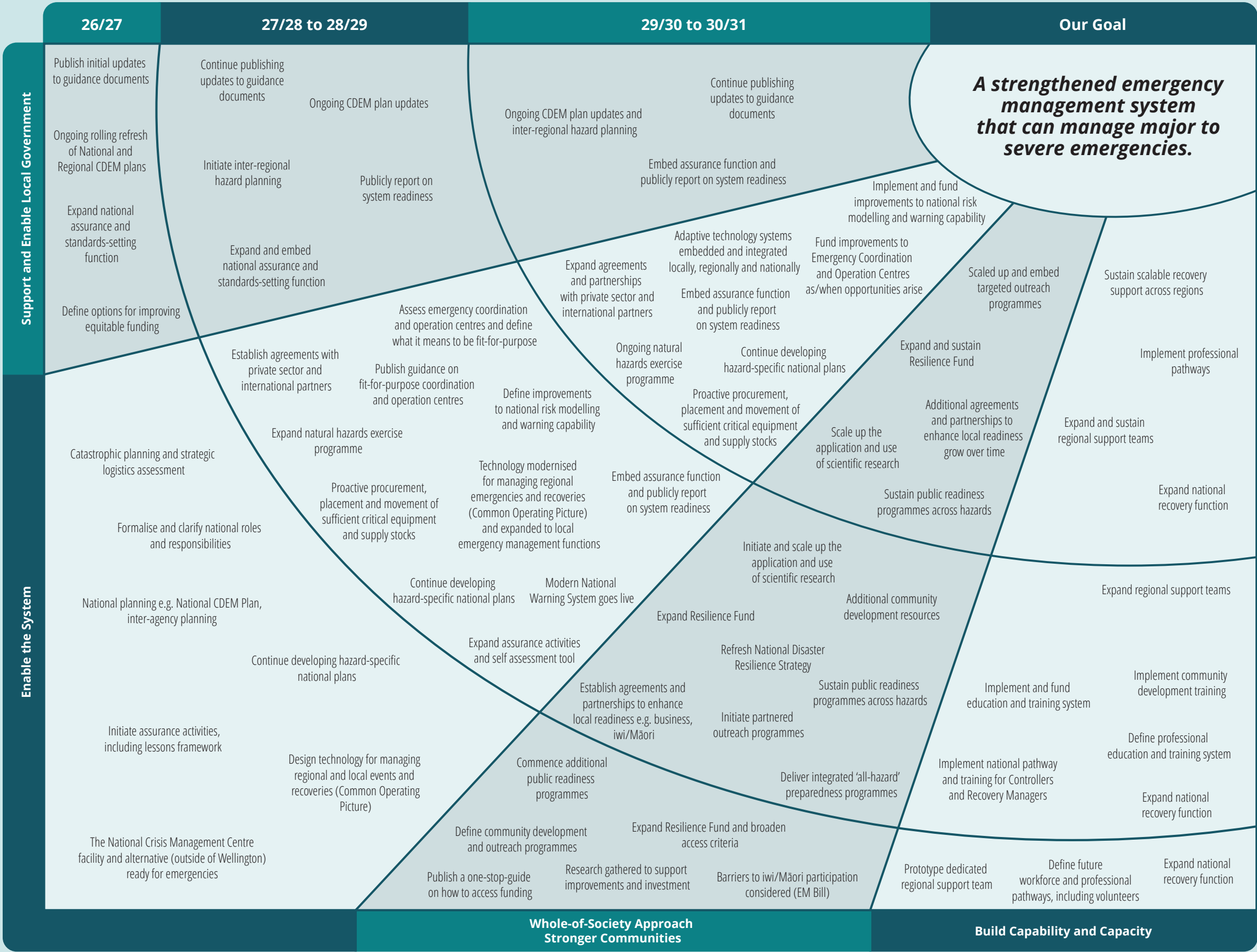
Key initiatives 2026-2031		What will be different
	Increased public readiness and priority community development programmes e.g. evidence-based community and national initiatives to build self-reliance	Each of us knows how to protect ourselves and others. We are deliberate about taking action. Businesses, communities and iwi/Māori are the champions, equipped, organised, funded and supported to prepare, respond and recover. At risk communities are strong “first responders” and have built resilience and the ability to protect themselves.
	Resilience Fund increased and refreshed with broader access criteria e.g. resilience pods with equipment and supplies including water tanks and solar power, risk and resilience science operationalised locally	
	Increased national response and recovery capacity and capability supporting regions e.g. regional support teams and a national pool of specialist recovery experts	We have the emergency management workforce and capability required to support communities.
	Improved capability and professionalism across the system e.g. new standards, assurance, exercises, integrated planning, education, training, guidance, tools	Leaders are accountable and people have the skills, knowledge, and expertise at all levels to manage the increasing frequency and severity of emergencies and recovery efforts.
	Modernise antiquated technology for real-time information, warnings and emergency response and recovery decisions e.g. Common Operating Picture across NZ	Data, facilities, equipment and technology help us — we have and use these to protect lives and rapidly mobilise relief and expertise to where it is most needed.
	National Crisis Management Centre (bunker) and alternative, guidance to improve regional and local coordination centres e.g. local centres beefed up with technology, standard operating procedures and training	
	Increased stockpiles and access to nationally critical equipment and supplies e.g. generators, food, petrol, bridges, medical and road supplies stockpiled	

Implementation

Cabinet has agreed to this Roadmap in principle, subject to further policy work, the passage of enabling legislation, and availability of new funding through future Budgets.

The National Emergency Management Agency will prioritise activity that can be delivered from its current baselines and go back to Government for proposed initiatives that will require new funding from future budgets.

Proposed initiatives



Cabinet has agreed to this Roadmap in principle, subject to further policy work, the passage of enabling legislation, and availability of new funding through future Budgets.

The National Emergency Management Agency will prioritise activity that can be delivered from its current baselines and go back to Government for proposed initiatives that will require new funding from future budgets.